

# IL280 Series

## LED Canopy Lighting



### Advantages of IL280

- Compact, low profile LED canopy light
- Available in 35 / 55 / 75 Watt configurations with various optics
- Ultra-bright industry leading high efficacy up to 187 lm / W
- Proprietary reflector optics enabling glare-free uniform lighting, eliminating the need for costly and fragile plastic lenses
- Advanced thermal technology enables low LED junction temperatures (Tj) for maintenance free long life
- IP68 rated tri-proof (dust, vapor & water-proof) luminaire
- Available with versatile mounting options for various canopy applications
- Titanium rated high efficiency LED driver with smart circuitry
- L70 ≥ 145,000 hours with an exceptional 10-year limited warranty
- Designed and engineered in the USA

### Applications

- Gas Stations
- Building Overhangs
- Convenience Stores
- Entry Canopies
- Walkway Canopies



Years Warranty



Wet Location



Impact Resistance

# IL280 Series

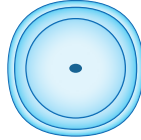
## LED Canopy Lighting

### Optics Options

**R5 - Type V Round** / symmetric for mid-low bay, parking garages and flood applications

---

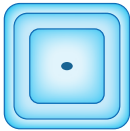
**M - Medium**



**S5 - Type V Square** / symmetric for mid-low bay, aisle and flood applications

---

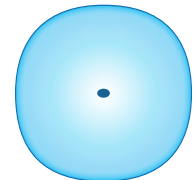
**S - Short**



**F5 - Type V Opaque - Frosted** / symmetric for ultra uniform & low glare applications

---

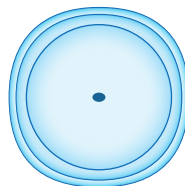
**L - Long**



**WC - Well Glass - Clear** / spherical symmetric for area lighting, parking garages and wide flood applications

---

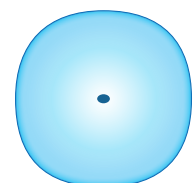
**M - Medium**



**WF - Well Glass - Frosted** / spherical symmetric for ultra uniform & low glare applications

---

**L - Long**



# IL280 Series

## LED Canopy Lighting

### Mounting Options



#### Pendant Mounting System

---

Part Number	Part Description
-------------	------------------

PDS-IL28	Pendant Mounting Interface / 3/4" Pipe Not Included
----------	---



#### Snap & Turn Surface Mounting System

---

Part Number	Part Description
-------------	------------------

SST-IL28-B	Snap & Turn Surface Mount Bracket / Steel Black
------------	---



#### Petroleum Canopy Mounting System

---

Part Number	Part Description
-------------	------------------

CPY-IL28	Canopy Mounting System / Die-Cast Aluminum
----------	--

# IL280 Series

LED Canopy Lighting - 55Watt

## Ordering Information

IL28	Wattage	Voltage	Optics	Pitch	CCT	Driver & Control	Mounting *
	035 = 35Watt 055 = 55Watt 075 = 75Watt	UV = 100-277VAC HV = 200-480VAC DV = 127-390VDC	R5 = Type V Round S5 = Type V Square F5 = Type V Frosted WC = Well Glass Clear WF = Well Glass Frosted	S = Short M = Medium L = Long	30 = 3000K 40 = 4000K 50 = 5000K	ND = Non-Dimmable DM = Dimmable	PDS = Pendant Mount SST = Snap & Turn Mount CPY = Canopy Mount

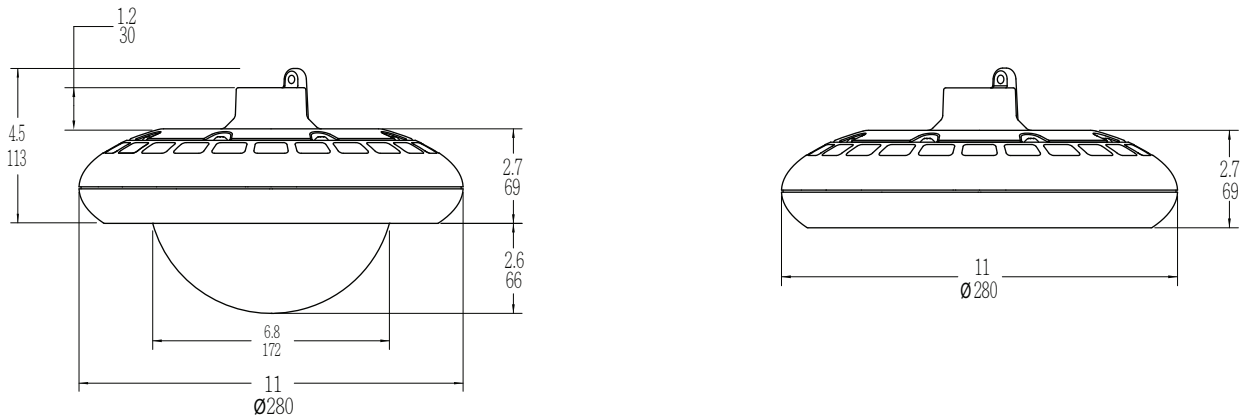
NOTE: Gray is the standard exterior color.

\* PDS is the standard mounting system, with 1" NPT threaded hole.

## Example

Part Number	Part Description
IL28055UV-R5M-50DM-CPY	LED Canopy Light / 55 Watt / 100-277VAC / Type V Round / Medium Pitch / 5000K Cool White / Dimmable / Canopy Mount

## External Dimensions



## Packaging Information

Model	Case Quantity	Dimensions (LxWxH)	Weight
IL280	1	30 x 30 x 13.3 cm 11.2 x 11.2 x 5.3 in	3.9 kg 8.6 lbs
IL280 Well Glass	1	30 x 30 x 20 cm 11.2 x 11.2 x 7.8 in	4 kg 8.8 lbs



# IL280 Series

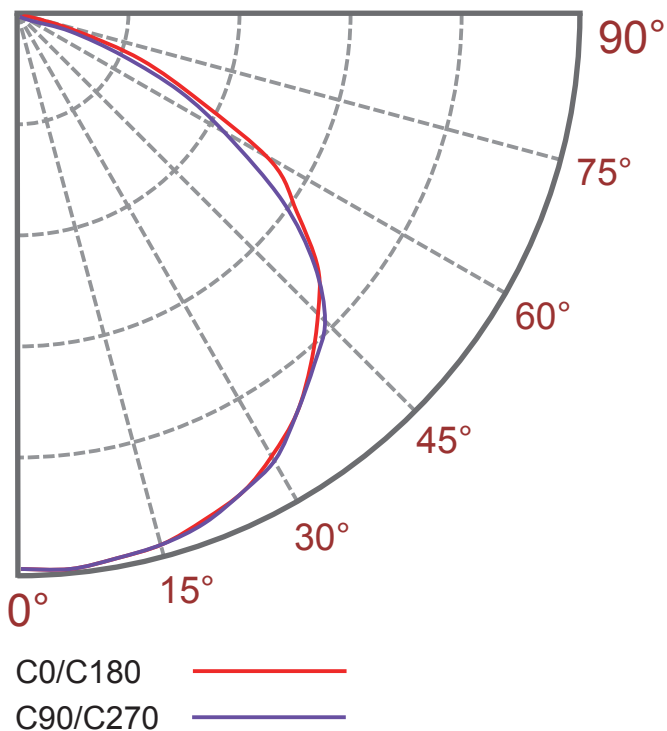
LED Canopy Lighting - 55Watt

## Specification - Type V Round Medium / Well Glass Clear Medium

Fixture Watts	55 W
Lumens (Total) *	10,010 lm
Efficacy *	182 lm / W
Number of LEDs & Driving Current	64@280mA
Ts - Solder Point Temp*	57°C / 134°F
L70 Rating @ Ta 25°C	>160K Hours
Operational Temperature (Ta)	-40° ~ 50°C / -40° ~ 122°F
Input Voltage	100~277VAC 47~63Hz Optional 200~480VAC / 127~390VDC
LED Model	Nichia / Lumileds / Cree
CRI	>75
Lighting Control	Dimmable (0-10V, PWM)
Warranty	10-Year Limited
Storage Temperature / Humidity	-50° ~ 80°C / -58° ~ 176°F / IP68 Rated Fixture
Transient Surge Protection	6kV / 3kA ( L-L, L-G )

\* Test data @ Ta: 25°C. All lumen values have ±7% tolerance  
NOTE: Light intensities measured directly below fixture

### Light Distribution Curve



### Zonal Lumen Summary

Zone (°)	Lumens	% Fixture
0-30	2743	27.4%
0-40	4615	46.1%
0-60	8569	85.6%
0-90	10010	100.0%
0-180	10010	100.0%

# IL280 Series

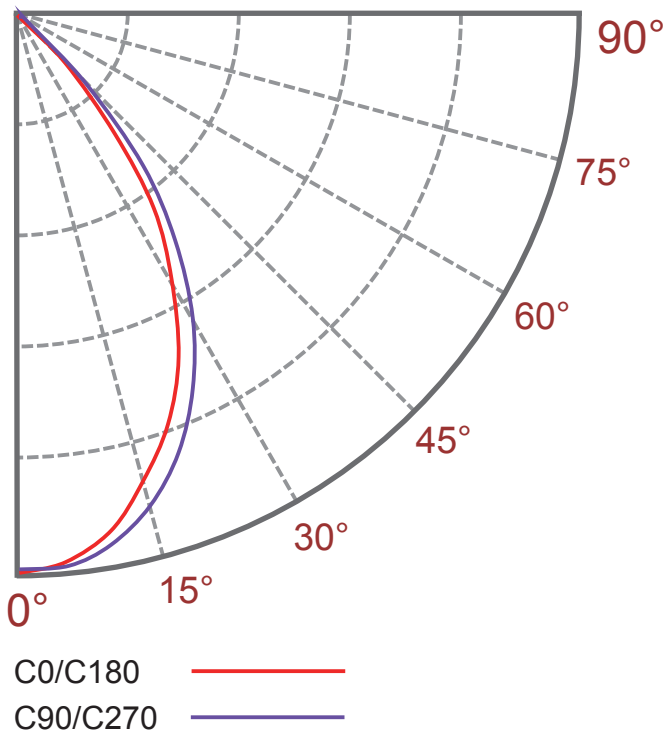
LED Canopy Lighting - 55Watt

## Specification - Type V Square Short

Fixture Watts	55 W
Lumens (Total) *	9,625 lm
Efficacy *	175 lm / W
Number of LEDs & Driving Current	64@280mA
Ts - Solder Point Temp*	57°C / 134°F
L70 Rating @ T <sub>a</sub> 25°C	>160K Hours
Operational Temperature (T <sub>a</sub> )	-40° ~ 50°C / -40° ~ 122°F
Input Voltage	100~277VAC 47~63Hz Optional 200~480VAC / 127~390VDC
LED Model	Nichia / Lumileds / Cree
CRI	>75
Lighting Control	Dimmable (0-10V, PWM)
Warranty	10-Year Limited
Storage Temperature / Humidity	-50° ~ 80°C / -58° ~ 176°F / IP68 Rated Fixture
Transient Surge Protection	6kV / 3kA ( L-L, L-G )

\* Test data @ T<sub>a</sub>: 25°C. All lumen values have ±7% tolerance  
NOTE: Light intensities measured directly below fixture

### Light Distribution Curve



### Zonal Lumen Summary

Zone (°)	Lumens	% Fixture
0-30	5756	59.8%
0-40	8229	85.5%
0-60	9615	99.9%
0-90	9625	100.0%
0-180	9625	100.0%

# IL280 Series

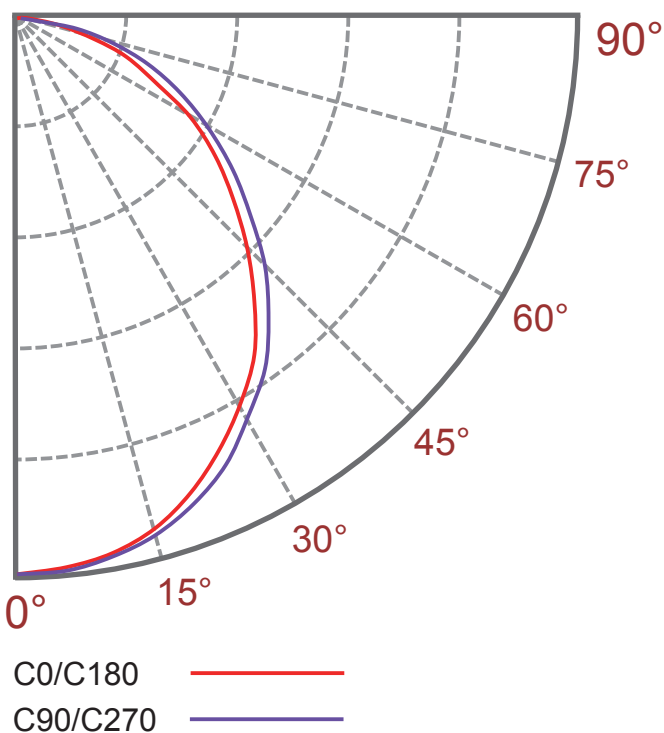
LED Canopy Lighting - 55Watt

## Specification - Type V Frosted Long / Well Glass Frosted Long

Fixture Watts	55 W
Lumens (Total) *	8,800 lm
Efficacy *	160 lm / W
Number of LEDs & Driving Current	64@280mA
Ts - Solder Point Temp*	58°C / 136°F
L70 Rating @ Ta 25°C	>160K Hours
Operational Temperature (Ta)	-40° ~ 50°C / -40° ~ 122°F
Input Voltage	100~277VAC 47~63Hz Optional 200~480VAC / 127~390VDC
LED Model	Nichia / Lumileds / Cree
CRI	>75
Lighting Control	Dimmable (0-10V, PWM)
Warranty	10-Year Limited
Storage Temperature / Humidity	-50° ~ 80°C / -58° ~ 176°F / IP68 Rated Fixture
Transient Surge Protection	6kV / 3kA ( L-L, L-G )

\* Test data @ Ta: 25°C. All lumen values have ±7% tolerance  
NOTE: Light intensities measured directly below fixture

### Light Distribution Curve



### Zonal Lumen Summary

Zone (°)	Lumens	% Fixture
0-30	2587	29.4%
0-40	4171	47.4%
0-60	7110	80.8%
0-90	8774	99.7%
0-180	8800	100.0%