

# IL280 Series

## LED Parking Garage Lighting



### Advantages of IL280

- Compact, low profile LED parking light
- Available in 35 / 55 / 75Watt configurations with various optics
- Ultra-bright industry leading high efficacy up to 187 lm / W
- Proprietary reflector optics enabling glare-free uniform lighting, eliminating the need for costly and fragile plastic lenses
- Advanced thermal technology enables low LED junction temperatures (Tj) for maintenance free long life
- Optional wireless smart control system with motion & daylight sensor enabling greater savings and flexibility
- IP68 rated tri-proof (dust, vapor & water-proof) luminaire
- Available with versatile mounting options for various flood applications
- Titanium rated high efficiency LED driver with smart circuitry
- L70 ≥ 145,000 hours with an exceptional 10-year limited warranty
- Designed and engineered in the USA

### Applications

- Multi-level Parking Garages
- Underground Parking Garage
- Carports & Garages



Years Warranty



Smart Control



Wet Location



Impact Resistance

# IL280 Series

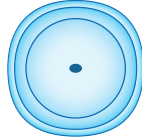
## LED Parking Garage Lighting

### Optics Options

**R5 - Type V Round** / symmetric for mid-low bay, parking garages and flood applications

---

**M - Medium**



**S5 - Type V Square** / symmetric for mid-low bay, aisle and flood applications

---

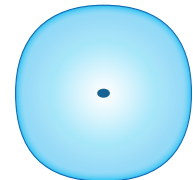
**S - Short**



**F5 - Type V Opaque - Frosted** / symmetric for ultra uniform & low glare applications

---

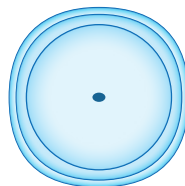
**L - Long**



**WC - Well Glass - Clear** / spherical symmetric for area lighting, parking garages and wide flood applications

---

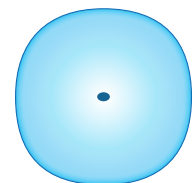
**M - Medium**



**WF - Well Glass - Frosted** / spherical symmetric for ultra uniform & low glare applications

---

**L - Long**



# IL280 Series

## LED Parking Garage Lighting

### Mounting Options



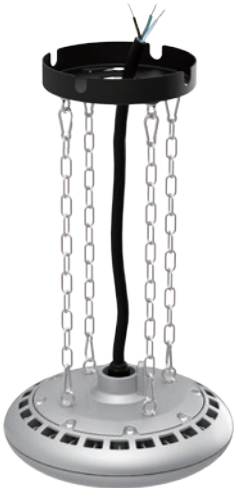
#### Pendant Mounting System

| Part Number | Part Description                                    |
|-------------|---|
| PDS-IL28    | Pendant Mounting Interface / 3/4" Pipe Not Included |



#### Snap & Turn Surface Mounting System

| Part Number | Part Description                                |
|-------------|---|
| SST-IL28-B  | Snap & Turn Surface Mount Bracket / Steel Black |



#### Chain Chandelier Mounting System

| Part Number  | Part Description   |
|--------------|--|
| CH4-IL28-45C | 4 Link Chain Chandelier System / 18" (45cm) / Chrome Steel |
| CH4-IL28-90C | 4 Link Chain Chandelier System / 36" (90cm) / Chrome Steel |



#### Swivel Mounting System

| Part Number | Part Description   |
|-------------|--|
| SWL-IL28-SS | Variable Angle Swivel Mounting Bracket / Stainless Steel |

# IL280 Series

## LED Parking Garage Lighting - 35Watt

### Ordering Information

| IL28 | Wattage                                      | Voltage   | Optics   | Pitch                               | CCT                                    | Driver & Control *   | Mounting **   |
|------|--|---|--|-------------------------------------|--|--|---|
|      | 035 = 35Watt<br>055 = 55Watt<br>075 = 75Watt | UV = 100-277VAC<br>HV = 200-480VAC<br>DV = 127-390VDC | R5 = Type V Round<br>S5 = Type V Square<br>F5 = Type V Frosted<br>WC = Well Glass Clear<br>WF = Well Glass Frosted | S = Short<br>M = Medium<br>L = Long | 30 = 3000K<br>40 = 4000K<br>50 = 5000K | ND = Non-Dimmable<br>DM = Dimmable<br>DS = Daylight Sensor<br>MS = Motion Sensor<br>SC = Smart Control | PDS = Pendant Mount<br>SST = Snap & Turn Mount<br>CH4 = 4 Chain Mount<br>SWL = Swivel Mount |

NOTE: Gray is the standard exterior color.

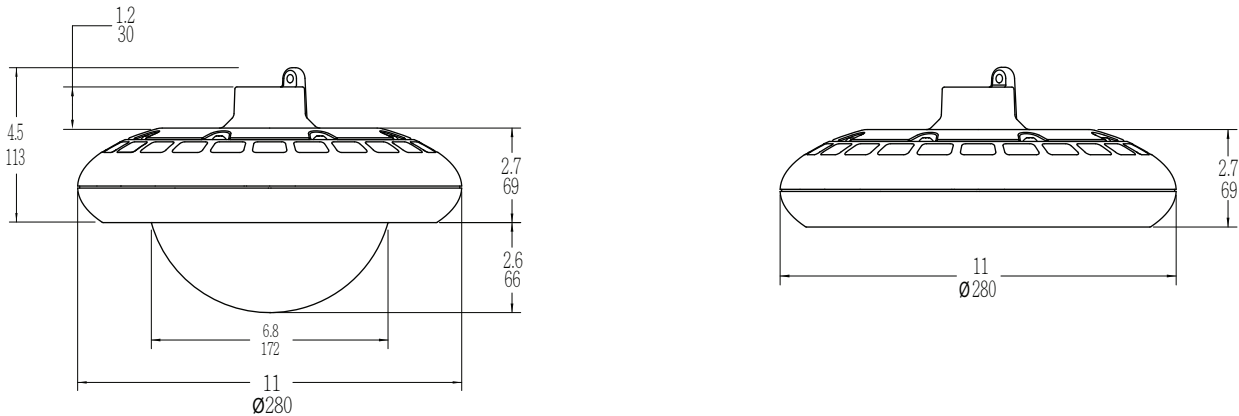
\* Smart control & daylight sensor available with ZHAGA standard receptacle module.

\*\* PDS is the standard mounting system, with 1" NPT threaded hole.

### Example

| Part Number            | Part Description   |
|------------------------|--|
| IL28035UV-R5M-50DM-PDS | IL280 LED Parking Light / 35 Watt / 100-277VAC / Type V Round / Medium Pitch / 5000K Cool White / Dimmable / Pendant Mount |

### External Dimensions



### Packaging Information

| Model            | Case Quantity | Dimensions (LxWxH)                        | Weight            |
|------------------|---------------|---|-------------------|
| IL280            | 1             | 30 x 30 x 13.3 cm<br>11.2 x 11.2 x 5.3 in | 3.9 kg<br>8.6 lbs |
| IL280 Well Glass | 1             | 30 x 30 x 20 cm<br>11.2 x 11.2 x 7.8 in   | 4 kg<br>8.8 lbs   |



# IL280 Series

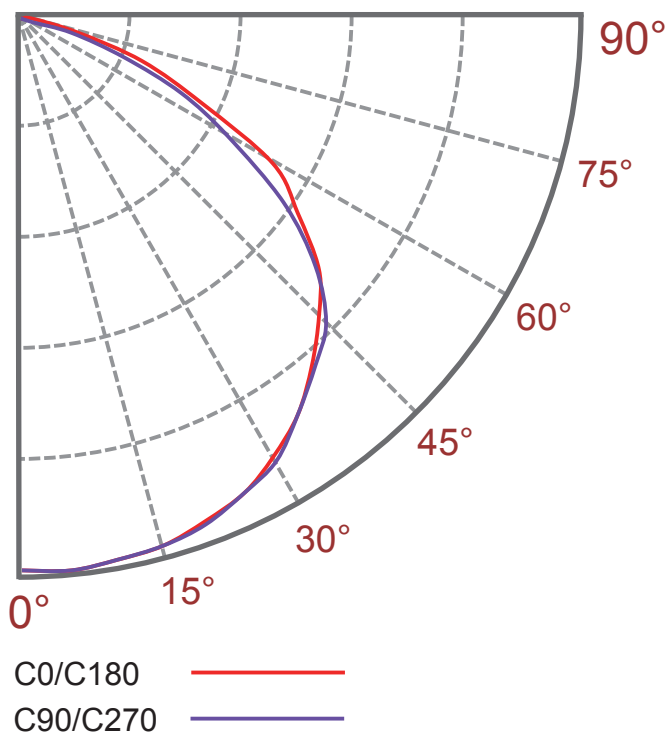
LED Parking Garage Lighting - 35Watt

## Specification - Type V Round Medium / Well Glass Clear Medium

|                                  |  |
|----------------------------------|--|
| Fixture Watts                    | 35 W   |
| Lumens (Total) *                 | 6,545 lm   |
| Efficacy *                       | 187 lm / W   |
| Number of LEDs & Driving Current | 64@255mA   |
| Ts - Solder Point Temp*          | 53°C / 127°F   |
| L70 Rating @ Ta 25°C             | >175K Hours  |
| Operational Temperature (Ta)     | -40° ~ 50°C / -40° ~ 122°F                                       |
| Input Voltage                    | 100~277VAC 47~63Hz Optional 200~480VAC / 127~390VDC              |
| LED Model                        | Nichia / Lumileds / Cree   |
| CRI                              | >75  |
| Lighting Control                 | Dimmable (0-10V, PWM) / Smart Control / Daylight & Motion Sensor |
| Warranty                         | 10-Year Limited  |
| Storage Temperature / Humidity   | -50° ~ 80°C / -58° ~ 176°F / IP68 Rated Fixture                  |
| Transient Surge Protection       | 6kV / 3kA ( L-L, L-G )   |

\* Test data @ Ta: 25°C. All lumen values have ±7% tolerance  
NOTE: Light intensities measured directly below fixture

### Light Distribution Curve



### Zonal Lumen Summary

| Zone (°) | Lumens | % Fixture |
|----------|--------|-----------|
| 0-30     | 1793   | 27.4%     |
| 0-40     | 3017   | 46.1%     |
| 0-60     | 5603   | 85.6%     |
| 0-90     | 6545   | 100.0%    |
| 0-180    | 6545   | 100.0%    |

# IL280 Series

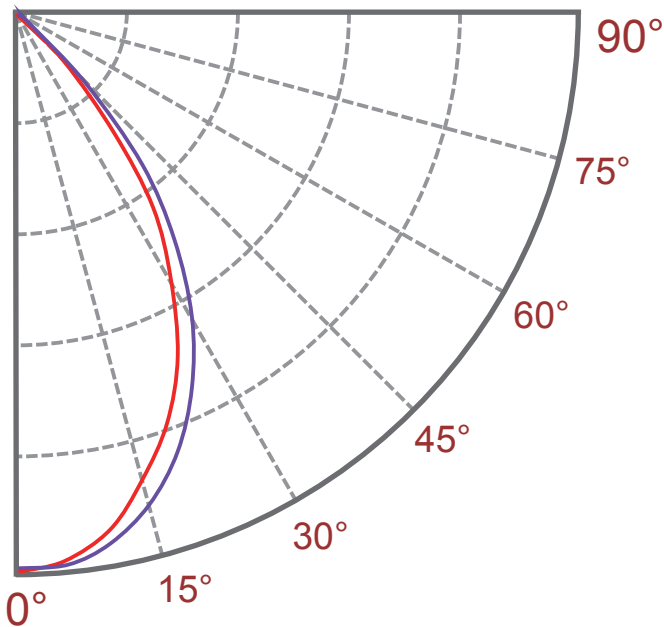
## LED Parking Garage Lighting - 35Watt

### Specification - Type V Square Short

|   |  |
|---|--|
| Fixture Watts                             | 35 W   |
| Lumens (Total) *                          | 6,335 lm   |
| Efficacy *                                | 181 lm / W   |
| Number of LEDs & Driving Current          | 64@280mA   |
| Ts - Solder Point Temp*                   | 53°C / 127°F   |
| L70 Rating @ T <sub>a</sub> 25°C          | >175K Hours  |
| Operational Temperature (T <sub>a</sub> ) | -40° ~ 50°C / -40° ~ 122°F                                       |
| Input Voltage                             | 100~277VAC 47~63Hz Optional 200~480VAC / 127~390VDC              |
| LED Model                                 | Nichia / Lumileds / Cree   |
| CRI                                       | >75  |
| Lighting Control                          | Dimmable (0-10V, PWM) / Smart Control / Daylight & Motion Sensor |
| Warranty                                  | 10-Year Limited  |
| Storage Temperature / Humidity            | -50° ~ 80°C / -58° ~ 176°F / IP68 Rated Fixture                  |
| Transient Surge Protection                | 6kV / 3kA ( L-L, L-G )   |

\* Test data @ T<sub>a</sub>: 25°C. All lumen values have ±7% tolerance  
 NOTE: Light intensities measured directly below fixture

### Light Distribution Curve



C0/C180 —  
 C90/C270 —

### Zonal Lumen Summary

| Zone (°) | Lumens | % Fixture |
|----------|--------|-----------|
| 0-30     | 3788   | 59.8%     |
| 0-40     | 5420   | 85.5%     |
| 0-60     | 6329   | 99.9%     |
| 0-90     | 6335   | 100.0%    |
| 0-180    | 6335   | 100.0%    |

# IL280 Series

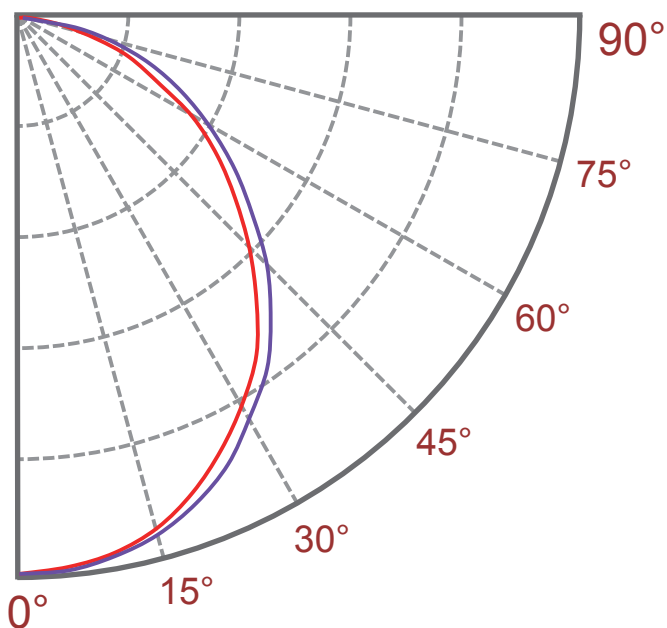
## LED Parking Garage Lighting - 35Watt

### Specification - Type V Frosted Long / Well Glass Frosted Long

|                                  |  |
|----------------------------------|--|
| Fixture Watts                    | 35 W   |
| Lumens (Total) *                 | 5,845 lm   |
| Efficacy *                       | 167 lm / W   |
| Number of LEDs & Driving Current | 64@385mA   |
| Ts - Solder Point Temp*          | 54°C / 129°F   |
| L70 Rating @ Ta 25°C             | >175K Hours  |
| Operational Temperature (Ta)     | -40° ~ 50°C / -40° ~ 122°F                                       |
| Input Voltage                    | 100~277VAC 47~63Hz Optional 200~480VAC / 127~390VDC              |
| LED Model                        | Nichia / Lumileds / Cree   |
| CRI                              | >75  |
| Lighting Control                 | Dimmable (0-10V, PWM) / Smart Control / Daylight & Motion Sensor |
| Warranty                         | 10-Year Limited  |
| Storage Temperature / Humidity   | -50° ~ 80°C / -58° ~ 176°F / IP68 Rated Fixture                  |
| Transient Surge Protection       | 6kV / 3kA ( L-L, L-G )   |

\* Test data @ Ta: 25°C. All lumen values have ±7% tolerance  
NOTE: Light intensities measured directly below fixture

### Light Distribution Curve



C0/C180 —  
C90/C270 —

### Zonal Lumen Summary

| Zone (°) | Lumens | % Fixture |
|----------|--------|-----------|
| 0-30     | 1718   | 29.4%     |
| 0-40     | 2771   | 47.4%     |
| 0-60     | 4723   | 80.8%     |
| 0-90     | 5827   | 99.7%     |
| 0-180    | 5845   | 100.0%    |