

# IL280 Series

PARKING APPLICATION LED LUMINARE



# IL280 Series

## LED Parking Garage Lighting



### Product Information

The IL280 series is a compact low-profile LED parking garage luminaire delivering ultra-bright, glare-free lighting for drivers and pedestrians in a variety of parking structure applications. Its compact size enables the fixture to be easily mounted in tight spaces and is available in multiple lumen packages, optics variations and versatile mounting options.

Patented thermal management and proprietary optical system ensures low LED operating temperatures enabling extended lumen maintenance with virtually zero fixture maintenance over its 10-year of life expectancy. This robust IL280 has an IP68-rating for complete weather protection.

Patent No. US 8,272,765 B2 - US 8,757,842 B2 - US 9,383,084 B2  
Other US and international patents pending

### Applications

- Multi-level Parking Garages
- Underground Parking Garage
- Carports & Garages

# IL280 Series

## LED Parking Garage Lighting



Years Warranty



Smart Control



Wet Location



Impact Resistance

### Advantages of IL280

- Compact, low profile LED parking light
- Available in 35 / 55 / 75Watt configurations with various optics
- Ultra-bright industry leading high efficacy up to 187 lm / W
- Proprietary reflector optics enabling glare-free uniform lighting, eliminating the need for costly and fragile plastic lenses
- Advanced thermal technology enables low LED junction temperatures (Tj) for maintenance free long life
- Optional wireless smart control system with motion & daylight sensor enabling greater savings and flexibility
- IP68 rated tri-proof (dust, vapor & water-proof) luminaire
- Available with versatile mounting options for various flood applications
- Titanium rated high efficiency LED driver with smart circuitry
- L70 ≥ 145,000 hours with an exceptional 10-year limited warranty
- Designed and engineered in the USA

# IL280 Series

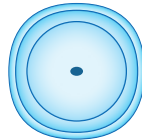
## LED Parking Garage Lighting

### Optics Options

**R5 - Type V Round** / symmetric for mid-low bay, parking garages and flood applications

---

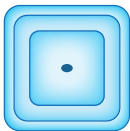
**M - Medium**



**S5 - Type V Square** / symmetric for mid-low bay, aisle and flood applications

---

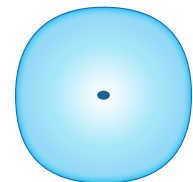
**S - Short**



**F5 - Type V Opaque - Frosted** / symmetric for ultra uniform & low glare applications

---

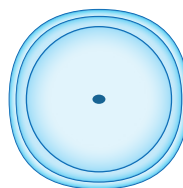
**L - Long**



**WC - Well Glass - Clear** / spherical symmetric for area lighting, parking garages and wide flood applications

---

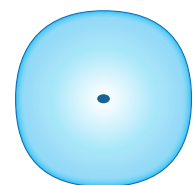
**M - Medium**



**WF - Well Glass - Frosted** / spherical symmetric for ultra uniform & low glare applications

---

**L - Long**

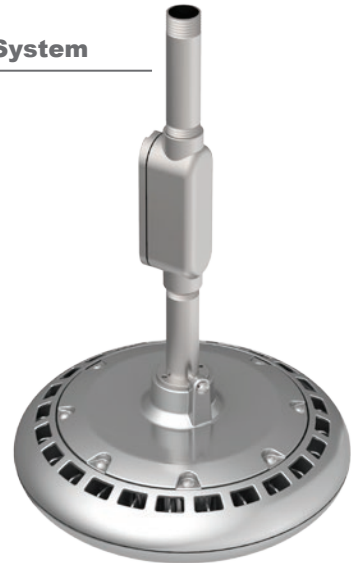


# IL280 Series

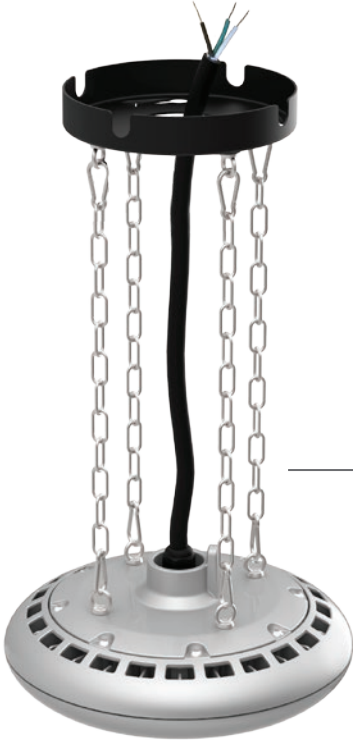
## LED Parking Garage Lighting

### Mounting Options

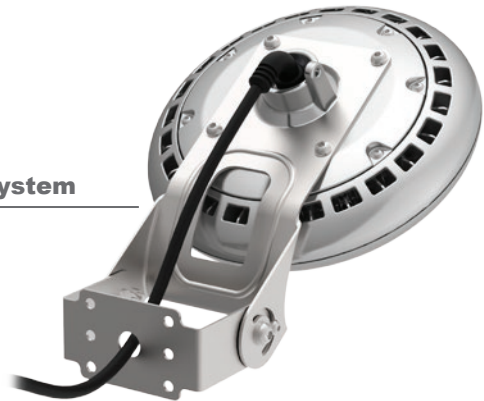
PDS - Pendant Mounting System



Chain Mounting System - CH4



SWL - Swivel Mounting System



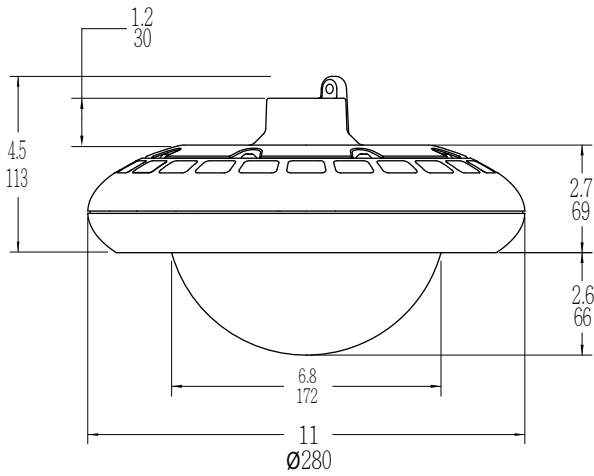
Snap & Turn - SST  
Surface Mounting System



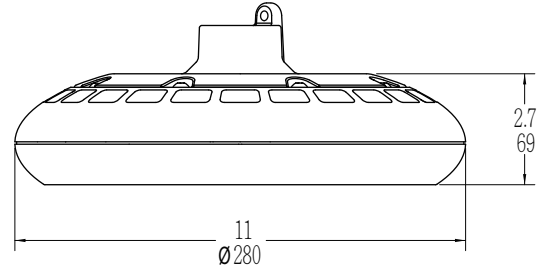
# IL280 Series

## LED Parking Garage Lighting

### External Dimensions



**IL280 Well Glass**



**IL280**

### Packaging Information

Model	Case Quantity	Dimensions (LxWxH)	Weight
IL280	1	30 x 30 x 13.3 cm 11.2 x 11.2 x 5.3 in	3.9 kg 8.6 lbs
IL280 Well Glass	1	30 x 30 x 20 cm 11.2 x 11.2 x 7.8 in	4 kg 8.8 lbs

# IL280 Series

## LED Parking Garage Lighting

### Ordering Information

IL28	Wattage	Voltage	Optics	Pitch	CCT	Driver & Control *	Mounting **
	035 = 35Watt 055 = 55Watt 075 = 75Watt	UV = 100-277VAC HV = 200-480VAC DV = 127-390VDC	R5 = Type V Round S5 = Type V Square F5 = Type V Frosted WC = Well Glass Clear WF = Well Glass Frosted	S = Short M = Medium L = Long	30 = 3000K 40 = 4000K 50 = 5000K	ND = Non-Dimmable DM = Dimmable DS = Daylight Sensor MS = Motion Sensor SC = Smart Control	PDS = Pendant Mount SST = Snap & Turn Mount CH4 = 4 Chain Mount SWL = Swivel Mount

NOTE: Gray is the standard exterior color.

\* Smart control & daylight sensor available with ZHAGA standard receptacle module.

\*\* PDS is the standard mounting system, with 1" NPT threaded hole.

### Example

Part Number	Part Description
IL28035UV-R5M-50DM-PDS	IL280 LED Parking Light / 35 Watt / 100-277VAC / Type V Round / Medium Pitch / 5000K Cool White / Dimmable / Pendant Mount

### Specification - Type V Round Medium / Well Glass Clear Medium

Fixture Watts	35 W	55 W	75 W
Lumens (Total) *	6,545 lm	10,010 lm	13,050 lm
Efficacy *	187 lm / W	182 lm / W	174 lm / W
Number of LEDs & Driving Current	64@190mA	64@280mA	64@385mA
Ts - Solder Point Temp*	53°C / 127°F	57°C / 134°F	62°C / 144°F
L70 Rating @ Ta 25°C	>175K Hours	>160K Hours	>145K Hours
Operational Temperature (Ta)	-40° ~ 50°C / -40° ~ 122°F		
Input Voltage	100~277VAC 47~63Hz Optional 200~480VAC / 127~390VDC		
LED Model	Nichia / Lumileds / Cree		
CRI	>75		
Lighting Control	Dimmable (0-10V, PWM) / Smart Control / Daylight & Motion Sensor		
Warranty	10-Year Limited		
Storage Temperature / Humidity	-50° ~ 80°C / -58° ~ 176°F / IP68 Rated Fixture		
Transient Surge Protection	6kV / 3kA ( L-L, L-G )		

\* Test data @ Ta: 25°C. All lumen values have ±7% tolerance



# IL280 Series

## LED Parking Garage Lighting

### Specification - Type V Square Short

Fixture Watts	35 W	55 W	75 W
Lumens (Total) *	6,335 lm	9,625 lm	12,450 lm
Efficacy *	181 lm / W	175 lm / W	166 lm / W
Number of LEDs & Driving Current	64@190mA	64@280mA	64@385mA
Ts - Solder Point Temp*	53°C / 127°F	57°C / 134°F	62°C / 144°F
L70 Rating @ Ta 25°C	>175K Hours	>160K Hours	>145K Hours
Operational Temperature (Ta)	-40° ~ 50°C / -40° ~ 122°F		
Input Voltage	100~277VAC 47~63Hz Optional 200~480VAC / 127~390VDC		
LED Model	Nichia / Lumileds / Cree		
CRI	>75		
Lighting Control	Dimmable (0-10V, PWM) / Smart Control / Daylight & Motion Sensor		
Warranty	10-Year Limited		
Storage Temperature / Humidity	-50° ~ 80°C / -58° ~ 176°F / IP68 Rated Fixture		
Transient Surge Protection	6kV / 3kA ( L-L, L-G )		

\* Test data @ Ta: 25°C. All lumen values have ±7% tolerance

### Specification - Type V Frosted Long / Well Glass Frosted Long

Fixture Watts	35 W	55 W	75 W
Lumens (Total) *	5,845 lm	8,800 lm	11,475 lm
Efficacy *	167 lm / W	160 lm / W	153 lm / W
Number of LEDs & Driving Current	64@190mA	64@280mA	64@385mA
Ts - Solder Point Temp*	54°C / 129°F	58°C / 136°F	64°C / 147°F
L70 Rating @ Ta 25°C	>175K Hours	>160K Hours	>145K Hours
Operational Temperature (Ta)	-40° ~ 50°C / -40° ~ 122°F		
Input Voltage	100~277VAC 47~63Hz Optional 200~480VAC / 127~390VDC		
LED Model	Nichia / Lumileds / Cree		
CRI	>75		
Lighting Control	Dimmable (0-10V, PWM) / Smart Control / Daylight & Motion Sensor		
Warranty	10-Year Limited		
Storage Temperature / Humidity	-50° ~ 80°C / -58° ~ 176°F / IP68 Rated Fixture		
Transient Surge Protection	6kV / 3kA ( L-L, L-G )		

\* Test data @ Ta: 25°C. All lumen values have ±7% tolerance

NOTE: Light intensities measured directly below fixture