

IL280 Series

LED Wall Mount Lighting



Advantages of IL280

- IP68 rated tri-proof (dust, vapor & water-proof) wall mount luminaire
- Available in 35 / 55 / 75 Watt configurations with various optics
- Ultra-bright industry leading high efficacy up to 187 lm / W
- Proprietary reflector optics enabling glare-free uniform lighting, eliminating the need for costly and fragile plastic lenses
- Advanced thermal technology enables low LED junction temperatures (Tj) for maintenance free long life
- Optional wireless smart control system with motion & daylight sensor enabling greater savings and flexibility
- Available with adjustable swivel mounting system for various wall mount applications
- Titanium rated high efficiency LED driver with smart circuitry
- L70 ≥ 145,000 hours with an exceptional 10-year limited warranty
- Designed and engineered in the USA

Applications

- Manufacturing Plants
- Warehouses
- Corridors and Stair Lighting
- Architectural Buildings
- General Area Lighting



Years Warranty



Smart Control



Wet Location



Impact Resistance

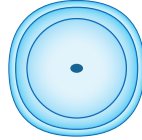
IL280 Series

LED Wall Mount Lighting

Optics Options

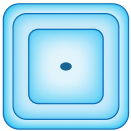
R5 - Type V Round / symmetric for mid-low bay, parking garages and flood applications

M - Medium



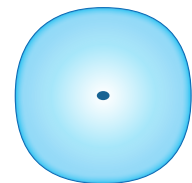
S5 - Type V Square / symmetric for mid-low bay, aisle and flood applications

S - Short



F5 - Type V Opaque - Frosted / symmetric for ultra uniform & low glare applications

L - Long



Mounting Options



Swivel Mounting System

Part Number

SWL-IL28-SS |

Part Description

Variable Angle Swivel Mounting Bracket / Stainless Steel

IL280 Series

LED Wall Mount Lighting - 55Watt

Ordering Information

| IL28 | Wattage | Voltage | Optics | Pitch | CCT | Driver & Control * | Mounting |
|------|--|---|--|-------------------------------------|--|--|--------------------|
| | 035 = 35Watt 055 = 55Watt 075 = 75Watt | UV = 100-277VAC HV = 200-480VAC DV = 127-390VDC | R5 = Type V Round S5 = Type V Square F5 = Type V Frosted WC = Well Glass Clear WF = Well Glass Frosted | S = Short M = Medium L = Long | 30 = 3000K 40 = 4000K 50 = 5000K | ND = Non-Dimmable DM = Dimmable DS = Daylight Sensor MS = Motion Sensor SC = Smart Control | SWL = Swivel Mount |

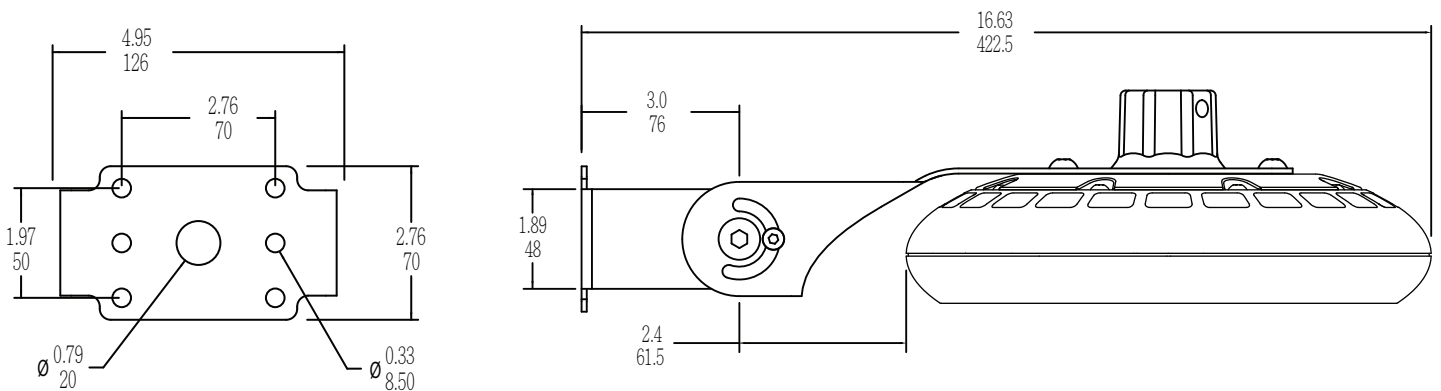
NOTE: Gray is the standard exterior color.

* Smart control & daylight sensor available with ZHAGA standard receptacle module.

Example

| Part Number | Part Description |
|------------------------|--|
| IL28055UV-R5M-50DM-SWL | IL280 LED Wall Mount Light / 55 Watt / 100-277VAC / Type V Round / Medium Pitch / 5000K Cool White / Dimmable / Swivel Mount |

External Dimensions



Packaging Information

| Model | Case Quantity | Dimensions (LxWxH) | Weight |
|-------|---------------|---|-------------------|
| IL280 | 1 | 30 x 30 x 13.3 cm 11.2 x 11.2 x 5.3 in | 3.9 kg 8.6 lbs |



IL280 Series

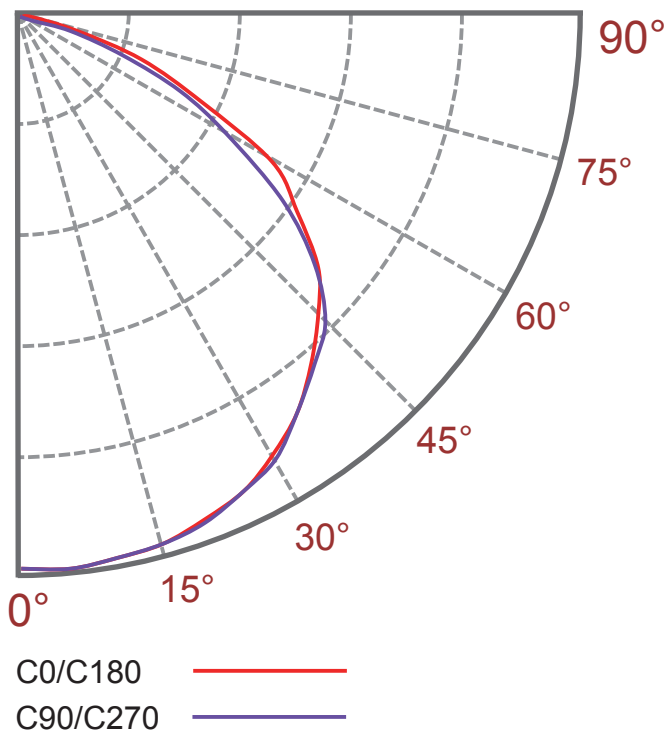
LED Wall Mount Lighting - 55Watt

Specification - Type V Round Medium / Well Glass Clear Medium

| | |
|----------------------------------|--|
| Fixture Watts | 55 W |
| Lumens (Total) * | 10,010 lm |
| Efficacy * | 182 lm / W |
| Number of LEDs & Driving Current | 64@280mA |
| Ts - Solder Point Temp* | 57°C / 134°F |
| L70 Rating @ Ta 25°C | >160K Hours |
| Operational Temperature (Ta) | -40° ~ 50°C / -40° ~ 122°F |
| Input Voltage | 100~277VAC 47~63Hz Optional 200~480VAC / 127~390VDC |
| LED Model | Nichia / Lumileds / Cree |
| CRI | >75 |
| Lighting Control | Dimmable (0-10V, PWM) / Smart Control / Daylight & Motion Sensor |
| Warranty | 10-Year Limited |
| Storage Temperature / Humidity | -50° ~ 80°C / -58° ~ 176°F / IP68 Rated Fixture |
| Transient Surge Protection | 6kV / 3kA (L-L, L-G) |

* Test data @ Ta: 25°C. All lumen values have ±7% tolerance
NOTE: Light intensities measured directly below fixture

Light Distribution Curve



Zonal Lumen Summary

| Zone (°) | Lumens | % Fixture |
|----------|--------|-----------|
| 0-30 | 2743 | 27.4% |
| 0-40 | 4615 | 46.1% |
| 0-60 | 8569 | 85.6% |
| 0-90 | 10010 | 100.0% |
| 0-180 | 10010 | 100.0% |

IL280 Series

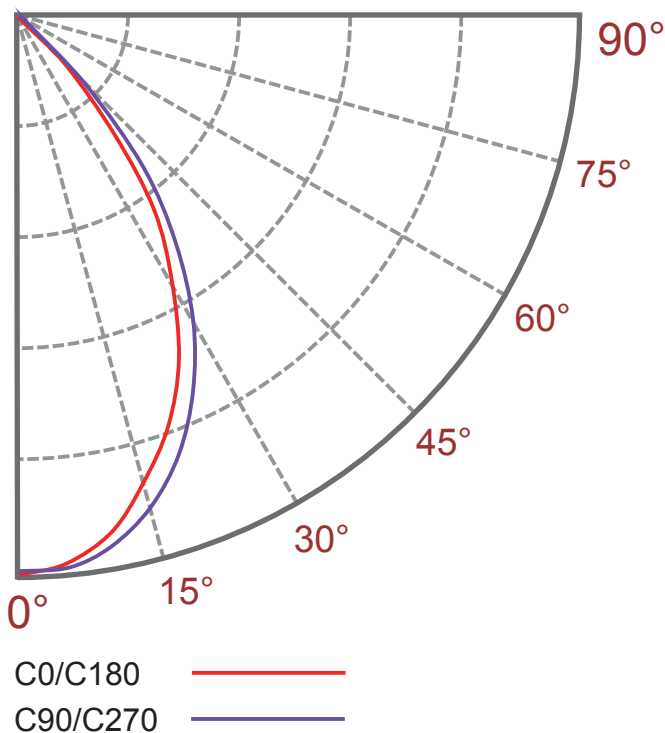
LED Wall Mount Lighting - 55Watt

Specification - Type V Square Short

| | |
|----------------------------------|--|
| Fixture Watts | 55 W |
| Lumens (Total) * | 9,625 lm |
| Efficacy * | 175 lm / W |
| Number of LEDs & Driving Current | 64@280mA |
| Ts - Solder Point Temp* | 57°C / 134°F |
| L70 Rating @ Ta25°C | >160K Hours |
| Operational Temperature (Ta) | -40° ~ 50°C / -40° ~ 122°F |
| Input Voltage | 100~277VAC 47~63Hz Optional 200~480VAC / 127~390VDC |
| LED Model | Nichia / Lumileds / Cree |
| CRI | >75 |
| Lighting Control | Dimmable (0-10V, PWM) / Smart Control / Daylight & Motion Sensor |
| Warranty | 10-Year Limited |
| Storage Temperature / Humidity | -50° ~ 80°C / -58° ~ 176°F / IP68 Rated Fixture |
| Transient Surge Protection | 6kV / 3kA (L-L, L-G) |

* Test data @ Ta: 25°C. All lumen values have ±7% tolerance
NOTE: Light intensities measured directly below fixture

Light Distribution Curve



Zonal Lumen Summary

| Zone (°) | Lumens | % Fixture |
|----------|--------|-----------|
| 0-30 | 5756 | 59.8% |
| 0-40 | 8229 | 85.5% |
| 0-60 | 9615 | 99.9% |
| 0-90 | 9625 | 100.0% |
| 0-180 | 9625 | 100.0% |

IL280 Series

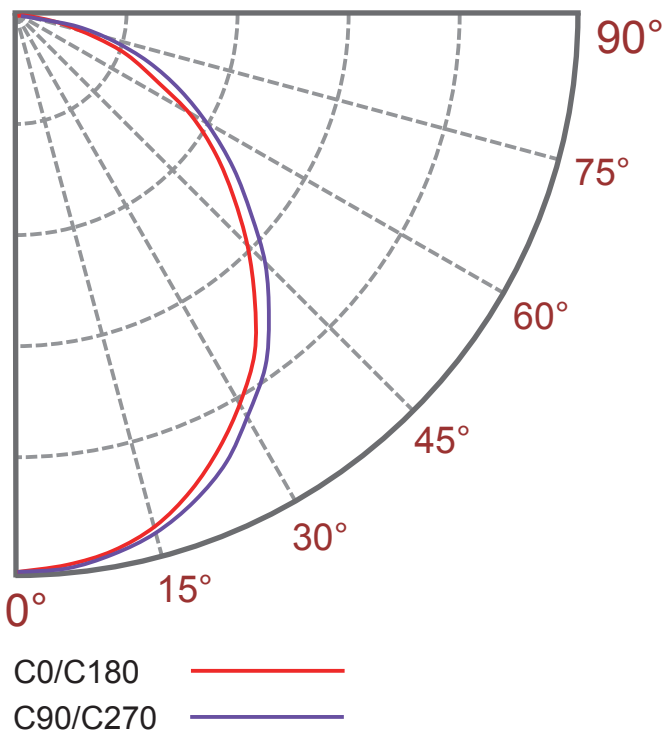
LED Wall Mount Lighting - 55Watt

Specification - Type V Frosted Long / Well Glass Frosted Long

| | |
|----------------------------------|--|
| Fixture Watts | 55 W |
| Lumens (Total) * | 8,800 lm |
| Efficacy * | 160 lm / W |
| Number of LEDs & Driving Current | 64@280mA |
| Ts - Solder Point Temp* | 58°C / 136°F |
| L70 Rating @ Ta 25°C | >160K Hours |
| Operational Temperature (Ta) | -40° ~ 50°C / -40° ~ 122°F |
| Input Voltage | 100~277VAC 47~63Hz Optional 200~480VAC / 127~390VDC |
| LED Model | Nichia / Lumileds / Cree |
| CRI | >75 |
| Lighting Control | Dimmable (0-10V, PWM) / Smart Control / Daylight & Motion Sensor |
| Warranty | 10-Year Limited |
| Storage Temperature / Humidity | -50° ~ 80°C / -58° ~ 176°F / IP68 Rated Fixture |
| Transient Surge Protection | 6kV / 3kA (L-L, L-G) |

* Test data @ Ta: 25°C. All lumen values have ±7% tolerance
NOTE: Light intensities measured directly below fixture

Light Distribution Curve



Zonal Lumen Summary

| Zone (°) | Lumens | % Fixture |
|----------|--------|-----------|
| 0-30 | 2587 | 29.4% |
| 0-40 | 4171 | 47.4% |
| 0-60 | 7110 | 80.8% |
| 0-90 | 8774 | 99.7% |
| 0-180 | 8800 | 100.0% |