



ILX450 Series

FOOD PROCESSING LED LUMINARE



ILX450 Series

LED Food Processing Lighting



Product Information

The ILX450 Series is an NSF certified and IP69K rated luminaire designed specifically to withstand the extreme hot and cold environments and daily high pressure wash-downs found in food and beverage processing plants. It is available with various optical configurations and stainless steel mounting options to cover all stages of food and beverage production found in:

- **Canneries**
- **Meat Packing Plants**
- **Slaughterhouses**
- **Rendering Plants**
- **Chicken Farms**
- **Sugar Mills**
- **Dairy Processing Facilities**
- **Bottling Plants & Breweries**

This corrosion resistant fixture is powered by an integrated high efficiency LED driver with industrial-grade electronic components, designed to maximize the fixtures lifespan. Its patented air bi-pass convection system enables excellent thermal management to ensure long LED life with extended lumen maintenance and virtually zero fixture maintenance. The ILX450 is available with wireless smart technology modernizing food processing facilities worldwide.

Patent No. US 8,272,765 B2 - US 8,757,842 B2 - US 9,383,084 B2
Other US and international patents pending

ILX450 Series

LED Food Processing Lighting



Years Warranty



Smart Control



Wet Location



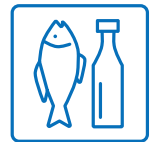
Pressure Washable



Impact Resistance



High Temperature



Food Processing

Advantages of ILX450

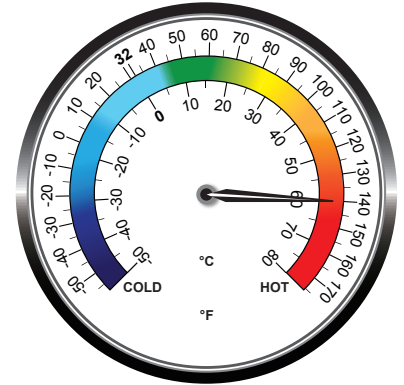
- NSF-certified LED food & beverage processing light
- Available in 100 ~ 220 watt configurations with various optics
- Ultra-bright industry leading high efficacy up to 170 lm / W
- Proprietary wide-angle optics enabling glare-free, uniform lighting for horizontal and vertical surfaces
- Advanced thermal technology enables low LED junction temperatures (Tj) for maintenance free long life
- Hazardous area and high temperature rated with an operational temperature of -40 ~ +65°C (-40 ~ +149°F)
- IP69K-rated tri-proof (dust, vapor & water-proof) light fixture, high pressure washable up to 1800PSI
- Industrial grade powder coating and copper-free aluminum build for complete corrosion resistance
- Marine-rated stainless steel fasteners and trimmings
- Optional wireless smart control system enabling greater flexibility
- Available with versatile mounting options for various food processing operations
- Titanium rated high efficiency LED driver with smart circuitry
- L70 ≥ 150,000 hours with an exceptional 10-year limited warranty
- Designed and engineered in the USA

ILX450 Series

LED Food Processing Lighting

Thermal Management

The new ILX450 LED drivers are designed specifically for extreme application lighting that requires high ambient operating temperatures. It utilizes the latest topology in electronic circuitry design with state of the art military and industrial grade components. The LED driver is encapsulated with thermal potting into a dedicated heat sink for better thermal performance and greater flexibility for service and maintenance. The ILX450 LED driver module delivers an outstanding 95% efficiency and is designed to last over 60,000 hours in harsh environments with high operating ambient temperatures.



System Watts	T6 Temperature Code Ambient Temperature Range		T5 Temperature Code Ambient Temperature Range		T4a Temperature Code Ambient Temperature Range	
100 W	-40°F ~ 140°F	-40°C ~ 60°C	-40°F ~ 149°F	-40°C ~ 65°C		
120 W	-40°F ~ 131°F	-40°C ~ 55°C	-40°F ~ 149°F	-40°C ~ 65°C		
150 W	-40°F ~ 122°F	-40°C ~ 50°C	-40°F ~ 149°F	-40°C ~ 65°C		
185 W	-40°F ~ 113°F	-40°C ~ 45°C	-40°F ~ 131°F	-40°C ~ 55°C	-40°F ~ 149°F	-40°C ~ 65°C
220 W	-40°F ~ 113°F	-40°C ~ 45°C	-40°F ~ 131°F	-40°C ~ 55°C	-40°F ~ 149°F	-40°C ~ 65°C

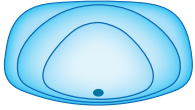
ILX450 Series

LED Food Processing Lighting

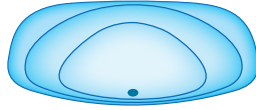
Optics Options

02 - Type II / wall mount & perimeter lighting applications

S - Short

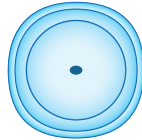


M - Medium



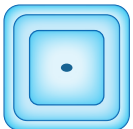
R5 - Type V Round / symmetric for low-mid-high bay, parking garages and flood applications

M - Medium



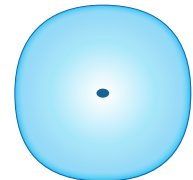
S5 - Type V Square / symmetric for high-bay, aisle, high-mast and flood applications

S - Short



F5 - Type V Opaque - Frosted / symmetric for ultra uniform & low glare applications

L - Long



ILX450 Series

LED Food Processing Lighting

Mounting Options



Swivel Mounting System - SWL

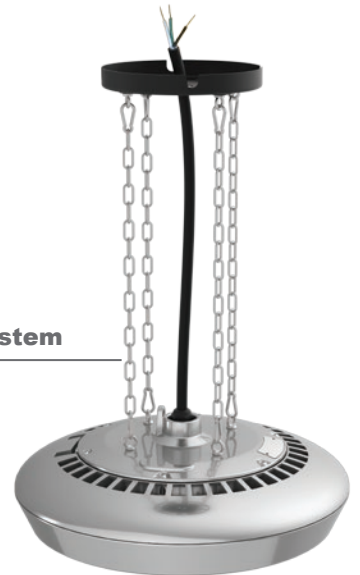
PDS - Pendant Mounting System



Snap & Turn Mounting System - SST



CH4 - 4 Chain Mounting System



90° Wall Mounting System - W90



TMS - Tandem Mounting System



ILX450 Series

LED Food Processing Lighting

Ordering Information

ILX45	Wattage	Voltage	Optics	Pitch	CCT	Driver & Control *	Mounting **
	100 = 100W 125 = 125W 150 = 150W 185 = 185W 220 = 220W	UV = 100-277VAC HV = 200-480VAC DV = 127-390VDC	O2 = Type II R5 = Type V Round S5 = Type V Square F5 = Type V Frosted	S = Short M = Medium L = Long	30 = 3000K 40 = 4000K 50 = 5000K	ND = Non-Dimmable DM = Dimmable SC = Smart Control	PDS = Pendant Mount SST = Snap & Turn Mount CH4 = 4 Chain Mount SWL = Swivel Mount W90 = 90° Wall Mount TMS = Tandem Mount

NOTE: Gray is the standard exterior color.

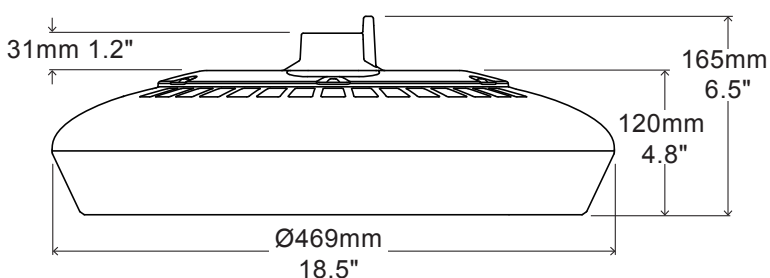
* Smart control available with ZHAGA standard receptacle module.

** PDS is the standard mounting system, with 1" NPT threaded hole.

Example

Part Number	Part Description
ILX45220UV-R5M-50DM-PDS	LED Food Processing Light / 220Watt / 100-277VAC / Type V Round / Medium Pitch / 5000K Cool White / Dimmable / Pendant Mount

External Dimensions



Packaging Information

Quantity	Dimensions (LxWxH)	Weight
1	50 x 50 x 23 cm 19.7x 19.7 x 9 in	12.5 kg 27.5 lbs



ILX450 Series

LED Food Processing Lighting

Specification - Type II Short

Fixture Watts	100 W	125 W	150 W	185 W	220 W
Lumens (Total)*	15,100 lm	18,625 lm	21,450 lm	25,160 lm	28,600 lm
Efficacy *	151 lm / W	149 lm / W	143 lm / W	136 lm / W	130 lm / W
Number of LEDs & Driving Current	96@355mA	96@440mA	96@515mA	96@625mA	96@730mA
T _s - Solder Point Temp *	52°C / 125°F	55°C / 131°F	59°C / 138°F	64°C / 147°F	68°C / 154°F
L70 Rating @ T _a 25°C	>185K hours	>180K hours	>175K hours	>160K hours	>150K hours
Operational Temperature (T _a)	-40° ~ 65°C / -40° ~ 149°F				
Input Voltage	100~277VAC 47~63Hz Optional 200~480VAC / 127~390VDC				
LED Model	Lumileds / Nichia / Cree				
CRI	>75				
Lighting Control	Dimmable (0-10V, PWM) / Smart Control				
Warranty	10-Year Limited				
Storage Temp. / Humidity	-50° ~ 80°C / -58° ~ 176°F / IP69K Rated Fixture				
Transient Surge Protection	10kV / 5kA (L-L, L-G) Optional 20kV / 10kA				

* Test data @ T_a: 25°C. All lumen values have ±7% tolerance

Specification - Type II Medium

Fixture Watts	100 W	125 W	150 W	185 W	220 W
Lumens (Total)*	14,600 lm	17,875 lm	20,700 lm	24,235 lm	27,500 lm
Efficacy *	146 lm / W	143 lm / W	138 lm / W	131 lm / W	125 lm / W
Number of LEDs & Driving Current	96@355mA	96@440mA	96@515mA	96@625mA	96@730mA
T _s - Solder Point Temp *	52°C / 125°F	55°C / 131°F	59°C / 138°F	64°C / 147°F	68°C / 154°F
L70 Rating @ T _a 25°C	>185K hours	>180K hours	>175K hours	>160K hours	>150K hours
Operational Temperature (T _a)	-40° ~ 65°C / -40° ~ 149°F				
Input Voltage	100~277VAC 47~63Hz Optional 200~480VAC / 127~390VDC				
LED Model	Lumileds / Nichia / Cree				
CRI	>75				
Lighting Control	Dimmable (0-10V, PWM) / Smart Control				
Warranty	10-Year Limited				
Storage Temp. / Humidity	-50° ~ 80°C / -58° ~ 176°F / IP69K Rated Fixture				
Transient Surge Protection	10kV / 5kA (L-L, L-G) Optional 20kV / 10kA				

* Test data @ T_a: 25°C. All lumen values have ±7% tolerance

ILX450 Series

LED Food Processing Lighting

Specification - Type V Round Medium

Fixture Watts	100 W	125 W	150 W	185 W	220 W
Lumens (Total)*	16,600 lm	19,625 lm	22,800 lm	27,750 lm	32,340 lm
Efficacy *	166 lm / W	157 lm / W	152 lm / W	150 lm / W	147 lm / W
Number of LEDs & Driving Current	112@305mA	112@375mA	112@440mA	112@535mA	112@625mA
T _s - Solder Point Temp *	50°C / 122°F	53°C / 127°F	56°C / 133°F	61°C / 142°F	66°C / 151°F
L70 Rating @ T _a 25°C	>185K hours	>180K hours	>175K hours	>160K hours	>150K hours
Operational Temperature (T _a)	-40° ~ 65°C / -40° ~ 149°F				
Input Voltage	100~277VAC 47~63Hz Optional 200~480VAC / 127~390VDC				
LED Model	Lumileds / Nichia / Cree				
CRI	>75				
Lighting Control	Dimmable (0-10V, PWM) / Smart Control				
Warranty	10-Year Limited				
Storage Temp. / Humidity	-50° ~ 80°C / -58° ~ 176°F / IP69K Rated Fixture				
Transient Surge Protection	10kV / 5kA (L-L, L-G) Optional 20kV / 10kA				

* Test data @ T_a: 25°C. All lumen values have ±7% tolerance

Specification - Type V Square Short

Fixture Watts	100 W	125 W	150 W	185 W	220 W
Lumens (Total)*	15,700 lm	18,500 lm	21,450 lm	26,085 lm	30,360 lm
Efficacy *	157 lm / W	148 lm / W	143 lm / W	141 lm / W	138 lm / W
Number of LEDs & Driving Current	112@305mA	112@375mA	112@440mA	112@535mA	112@625mA
T _s - Solder Point Temp *	51°C / 124°F	54°C / 129°F	57°C / 135°F	62°C / 144°F	68°C / 154°F
L70 Rating @ T _a 25°C	>185K hours	>180K hours	>175K hours	>160K hours	>150K hours
Operational Temperature (T _a)	-40° ~ 65°C / -40° ~ 149°F				
Input Voltage	100~277VAC 47~63Hz Optional 200~480VAC / 127~390VDC				
LED Model	Lumileds / Nichia / Cree				
CRI	>75				
Lighting Control	Dimmable (0-10V, PWM) / Smart Control				
Warranty	10-Year Limited				
Storage Temp. / Humidity	-50° ~ 80°C / -58° ~ 176°F / IP69K Rated Fixture				
Transient Surge Protection	10kV / 5kA (L-L, L-G) Optional 20kV / 10kA				

* Test data @ T_a: 25°C. All lumen values have ±7% tolerance

ILX450 Series

LED Food Processing Lighting

Specification - Type V Frosted Long

Fixture Watts	100 W	125 W	150 W	185 W	220 W
Lumens (Total)*	14,200 lm	16,750 lm	19,500 lm	23,680 lm	27,500 lm
Efficacy *	142 lm / W	134 lm / W	130 lm / W	128 lm / W	125 lm / W
Number of LEDs & Driving Current	112@305mA	112@375mA	112@440mA	112@535mA	112@625mA
T _s - Solder Point Temp *	51°C / 124°F	54°C / 129°F	56°C / 133°F	61°C / 142°F	67°C / 153°F
L70 Rating @ T _a 25°C	>185K hours	>180K hours	>175K hours	>160K hours	>150K hours
Operational Temperature (T _a)	-40° ~ 65°C / -40° ~ 149°F				
Input Voltage	100~277VAC 47~63Hz Optional 200~480VAC / 127~390VDC				
LED Model	Lumileds / Nichia / Cree				
CRI	>75				
Lighting Control	Dimmable (0-10V, PWM) / Smart Control				
Warranty	10-Year Limited				
Storage Temp. / Humidity	-50° ~ 80°C / -58° ~ 176°F / IP69K Rated Fixture				
Transient Surge Protection	10kV / 5kA (L-L, L-G) Optional 20kV / 10kA				

* Test data @ T_a: 25°C. All lumen values have ±7% tolerance

NOTE: Light intensities measured directly below fixture