

LU Series

INDUSTRIAL LINEAR LED LUMINAIRE



LU Series

LED Industrial Linear Lighting



Product Information

The LU Series is an IP67-rated LED linear industrial utility light providing reliability and visual clarity for a variety of low to mid-bay lighting applications such as parking structures, manufacturing facilities and warehouses.

This tri-proof fixture delivers ultra-wide glare free, 155° uniform lighting with an optional all-inclusive emergency battery backup system and motion sensor with soft-dimming function.

A light-weight, robust structural design with IK10 impact-rating ensures a long-lifespan for all industrial applications. The LU Series incorporates versatile mounting systems and has an accessible junction box for easy wiring and end-to-end installation.

Patent No.US 10,222,052 B1

Other US and international patents pending

Applications

- Manufacturing Plants
- Warehouses
- Cold-Storage Facilities
- Parking structures
- Telecom Centers
- Clean Rooms
- Supermarkets

LU Series

LED Industrial Linear Lighting



Years Warranty



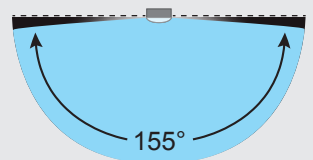
Wet Location



Impact Resistance

Advantages of LU Series

- IP67 rated tri-proof (dust, vapor & water-proof) LED linear industrial utility light
- High-efficacy fixture with up to 170 lm/W
- Flexible wattages and lengths ranging from 20~120 Watt
- Robust design with extruded billet aluminum housing and hard UV coated polycarbonate lens & end-caps delivering an outstanding IK10 impact rating
- Glare free 155° wide angle optics reducing fixture count by up to 25%
- Lightweight design with an accessible junction box for simplified installation
- 80 CRI for exceptional color rendition
- Optional smart motion sensing with soft dimming function
- Optional all-inclusive emergency battery backup system of 10 Watt for 90 minutes
- Versatile mounting options for all types of applications
- L70 ≥ 100,000 hours with 7-year limited warranty
- Designed and engineered in the USA

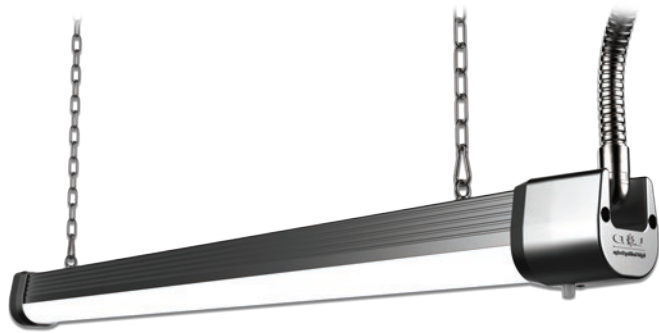


Wide Angle Optics

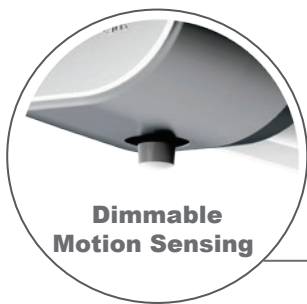
LU Series

LED Industrial Linear Lighting

Mounting Options



Chain Mounting System - CH2



Dimmable Motion Sensing

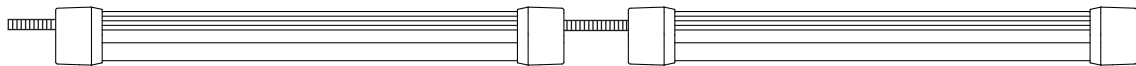


Surface Mounting System - SMH

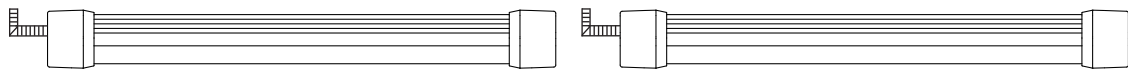
Wiring Options



JS - Dual Junction Box with pre-drilled conduit hole on both ends of each fixture for series connection



JP - Single Junction Box with pre-drilled conduit hole on one end of each fixture for parallel connection



WS - Dual Pre-Installed Cable Glands with single cable wire on one side of each fixture for series connection



WP - Single Pre-Installed Cable Gland with cable wire on one side of each fixture for parallel connection

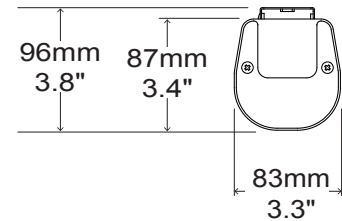
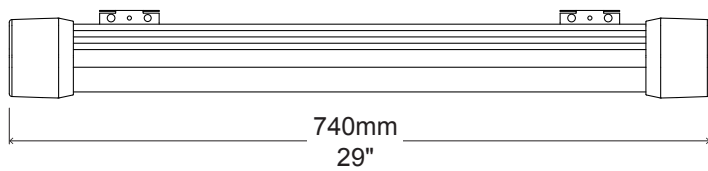


LU Series

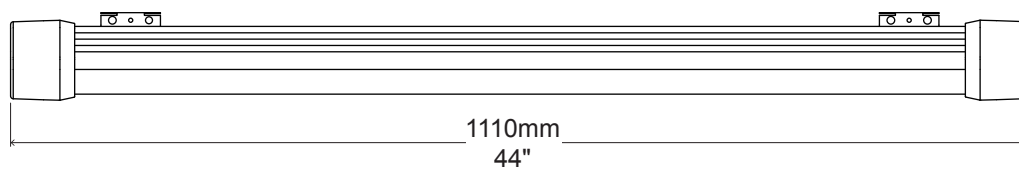
LED Industrial Linear Lighting

External Dimensions

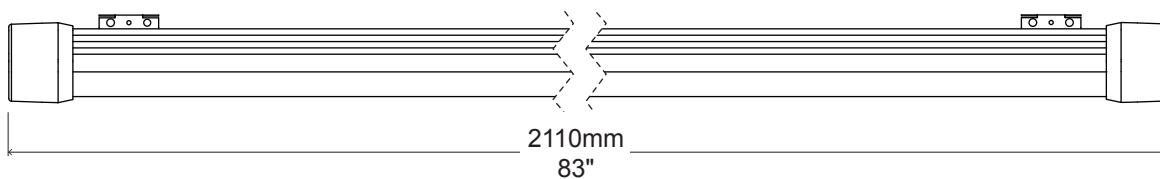
LU0720



LU1040 / LU1E40 / LU1060 / LU1E60



LU2080 / LU2120



Packaging Information

| Model | Case Quantity | Dimensions (L x W x H) | Weight |
|-------------|---------------|---|---------------------|
| LU0720 | 6 | 83 x 36 x 21 cm 32.7 x 14 x 8.3 in | 13 kg 28.6 lbs |
| LU1040 | 6 | 117 x 36 x 21 cm 46 x 14 x 8.3 in | 18 kg 40 lbs |
| LU1E40/1E60 | 6 | 117 x 36 x 21 cm 46 x 14 x 8.3 in | 18 kg 40 lbs |
| LU1060 | 6 | 117 x 36 x 21 cm 46 x 14 x 8.3 in | 18 kg 40 lbs |
| LU2080 | 4 | 217 x 24 x 21 cm 85.5 x 9.5 x 8.3 in | 26.5 kg 58.4 lbs |
| LU2120 | 4 | 217 x 24 x 21 cm 85.5 x 9.5 x 8.3 in | 26.5 kg 58.4 lbs |

LU Series

LED Industrial Linear Lighting

Ordering Information

| LU | Length & Wattage * | Wiring ** | Optics | CCT | Driver & Control | Mounting *** |
|----|---|--|--|--|--|--|
| | 0720 = 74cm / 29" / 20Watt 1040 = 111cm / 44" / 40Watt 1E40 = 111cm / 44" / 40/10Watt 1060 = 111cm / 44" / 60Watt 1E60 = 111cm / 44" / 60/10Watt 2080 = 211cm / 83" / 80Watt 2120 = 211cm / 83" / 120watt | JS = J-Box in Series JP = J-Box in Parallel WS = Cable in Series WP = Cable in Parallel | FL = Frosted Long CM = Clear Medium | 30 = 3000K 40 = 4000K 50 = 5000K | ND = Non-Dimmable DM = Dimmable MS = Motion Sensor | SMH = Surface Mount CH2 = 2 Chain Mount |

* LU1E emergency battery back up is available in standard 40 and 60 Watt configurations with an all-inclusive charger, battery, indicator and test switch.

** When ordering JS or JP Wiring options, please specify required conduit hole diameter.

*** Multi Mount system comes standard enabling surface, threaded rod and chain mounting.

Example

| Part Number | Part Description |
|----------------------|---|
| LU1040-JSFL-50DM-SMH | LED Industrial Linear Light / 111cm - 44" / 40 Watt / 100-277VAC / J-Box in-Series / Frosted Long / 5000K Cool White / Dimmable / Surface Mount |



LU Series

LED Industrial Linear Lighting

Specification - Frosted Long

| Model | LU0720 | LU1040 | LU1E40/60** | LU1060 | LU2080 | LU2120 |
|---|---|-------------|-------------|------------|-------------|------------|
| Fixture Watts * | 20 W | 40 W | 10 W | 60 W | 80 W | 120 W |
| Lumens (Total) * | 3,200 lm | 6,240 lm | 1,660 lm | 9,120 lm | 12,480 lm | 18,240 lm |
| Efficacy * | 160 lm / W | 156 lm / W | 166 lm / W | 152 lm / W | 156 lm / W | 152 lm / W |
| Number of LEDs & Driving Current | 104@65mA | 208@65mA | 208@22mA | 286@65mA | 416@65mA | 572@65mA |
| T _s - Solder Point Temp * | 47°C/117°F | 52°C/126°F | 39°C/102°F | 58°C/136°F | 55°C/131°F | 60°C/140°F |
| L70 Rating @ T _a 25°C | >110K hours | >100K hours | >140K hours | >90K hours | >100K hours | >90K hours |
| Light Beam Angle | 155° @ 80% Flux | | | | | |
| Operational Temperature (T _a) | -40° ~ 55°C / -40° ~ 131°F | | | | | |
| Input Voltage | 100-277VAC 50~60Hz | | | | | |
| LED Model | Lumileds / Nichia / Cree | | | | | |
| CRI | >80 | | | | | |
| Lighting Control | Dimmable (0-10V, PWM) / Motion Sensor | | | | | |
| Warranty | 7-Year Limited | | | | | |
| Storage Temperature / Humidity | -40° ~ 80°C / -40° ~ 176°F / IP67 Rated Fixture | | | | | |
| Transient Surge Protection | 6kV / 3kA (L-L, L-G) | | | | | |

* Test data @ T_a 25°C. All lumen values have ±7% tolerance

**LU1E emergency battery back up series is available in standard 40 and 60 Watt configurations with an all-inclusive inverter, indicator, and test switch.

Specification - Clear Medium

| Model | LU0720 | LU1040 | LU1E40/60** | LU1060 | LU2080 | LU2120 |
|---|---|-------------|-------------|------------|-------------|------------|
| Fixture Watts * | 20 W | 40 W | 10 W | 60 W | 80 W | 120 W |
| Lumens (Total) * | 3,440 lm | 6,800 lm | 1,800 lm | 10,080 lm | 13,600 lm | 20,160 lm |
| Efficacy * | 172 lm / W | 170 lm / W | 180 lm / W | 168 lm / W | 170 lm / W | 168 lm / W |
| Number of LEDs & Driving Current | 104@65mA | 208@65mA | 208@22mA | 286@65mA | 416@65mA | 572@65mA |
| T _s - Solder Point Temp * | 46°C/115°F | 51°C/124°F | 38°C/100°F | 56°C/133°F | 53°C/127°F | 58°C/136°F |
| L70 Rating @ T _a 25°C | >110K hours | >100K hours | >140K hours | >90K hours | >100K hours | >90K hours |
| Light Beam Angle | 155° @ 80% Flux | | | | | |
| Operational Temperature (T _a) | -40° ~ 55°C / -40° ~ 131°F | | | | | |
| Input Voltage | 100-277VAC 50~60Hz | | | | | |
| LED Model | Lumileds / Nichia / Cree | | | | | |
| CRI | >80 | | | | | |
| Lighting Control | Dimmable (0-10V, PWM) / Motion Sensor | | | | | |
| Warranty | 7-Year Limited | | | | | |
| Storage Temperature / Humidity | -40° ~ 80°C / -40° ~ 176°F / IP67 Rated Fixture | | | | | |
| Transient Surge Protection | 6kV / 3kA (L-L, L-G) | | | | | |

* Test data @ T_a 25°C. All lumen values have ±7% tolerance

**LU1E emergency battery back up series is available in standard 40 and 60 Watt configurations with an all-inclusive inverter, indicator, and test switch.