

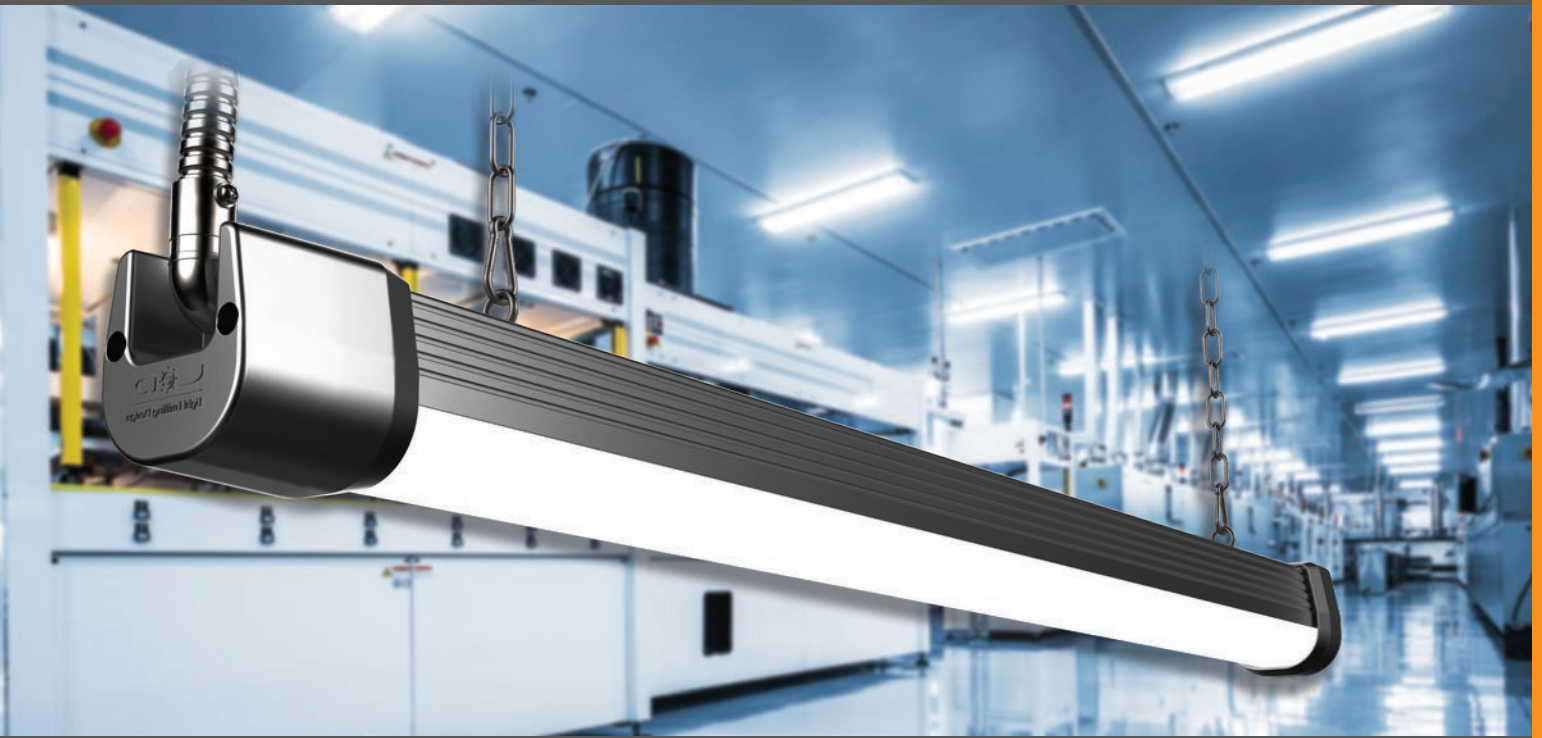
LU Series

LINEAR UTILITY LUMINARE



LU Series

LED Linear Utility Lighting



Product Information

The LU Series is an IP67-rated LED linear industrial utility light providing reliability and visual clarity for variety of mid-low bay lighting applications such as parking structures, manufacturing facilities and warehouses.

This tri-proof fixture delivers ultra-wide glare free, 155° uniform lighting with an optional all-inclusive emergency battery backup system and motion sensor with soft dimming function.

A light weight, robust structural design with IK10-impact rating ensures long lifespan for all industrial applications. The LU Series incorporates versatile mounting systems and has an accessible junction box for easy wiring and end to end installation.

Patent No.US 10,222,052 B1

Other US and international patents pending

Applications

- Manufacturing Plants
- Warehouses
- Cold Storage Facilities
- Parking structures
- Telecom Centers
- Clean Rooms
- Supermarkets

LU Series

LED Linear Utility Lighting



Years Warranty



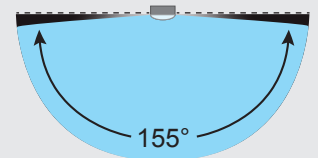
Wet Location



Impact Resistance

Advantages of LU Series

- IP67 rated tri-proof (dust, vapor & water-proof) LED linear industrial utility light
- High efficacy fixture with up to 170 lm / W
- Flexible wattages and lengths ranging from 20 ~ 120Watt
- Robust design with extruded billet aluminum housing and hard UV coated polycarbonate lens & end-caps delivering an outstanding IK10 impact rating
- Glare free 155° wide angle optics reducing fixture count by up to 25%
- Lightweight design with accessible junction box for simplified installation
- 80 CRI for exceptional color rendition
- Optional smart motion sensing with soft dimming function
- Optional all-inclusive emergency battery backup system 10 Watt / 90 minutes
- Versatile mounting options for all types of applications
- L70 ≥ 100,000 hours with 7-year limited warranty
- Designed and engineered in the USA

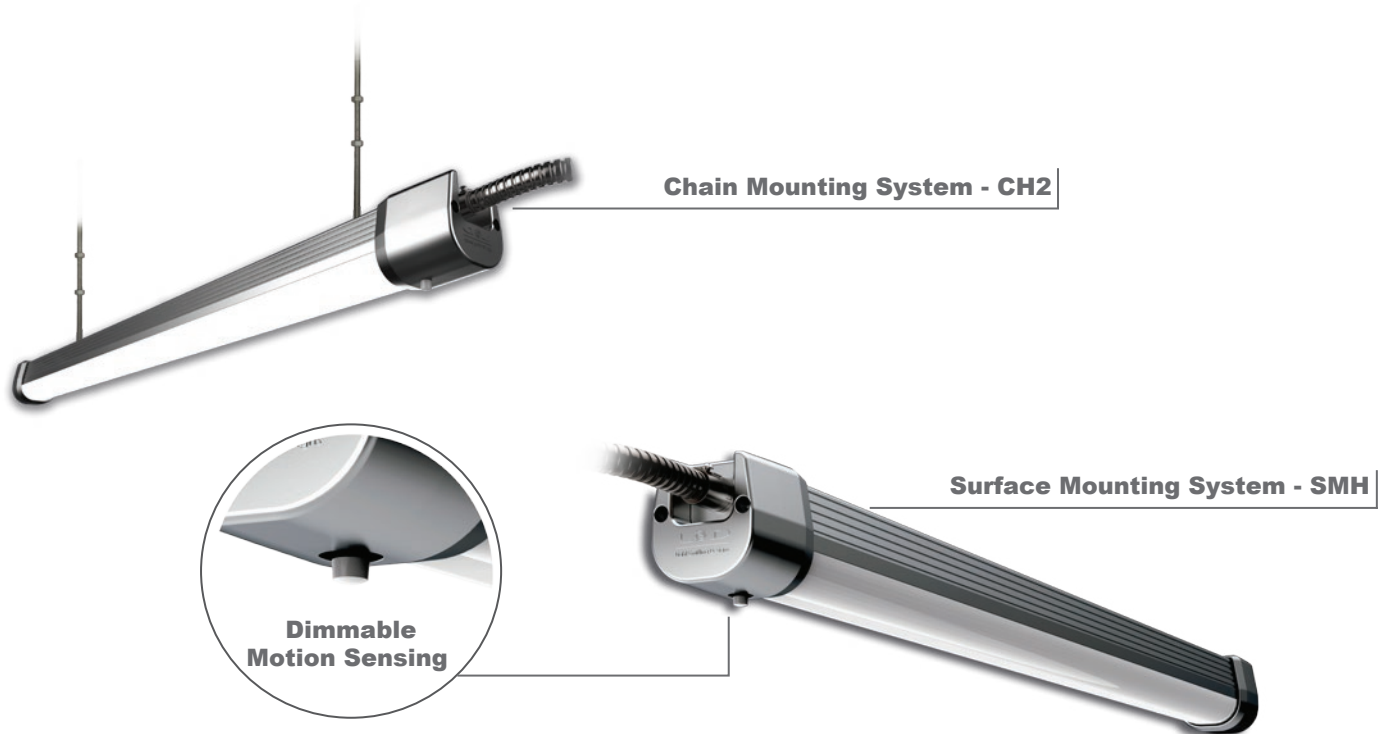


Wide Angle Optics

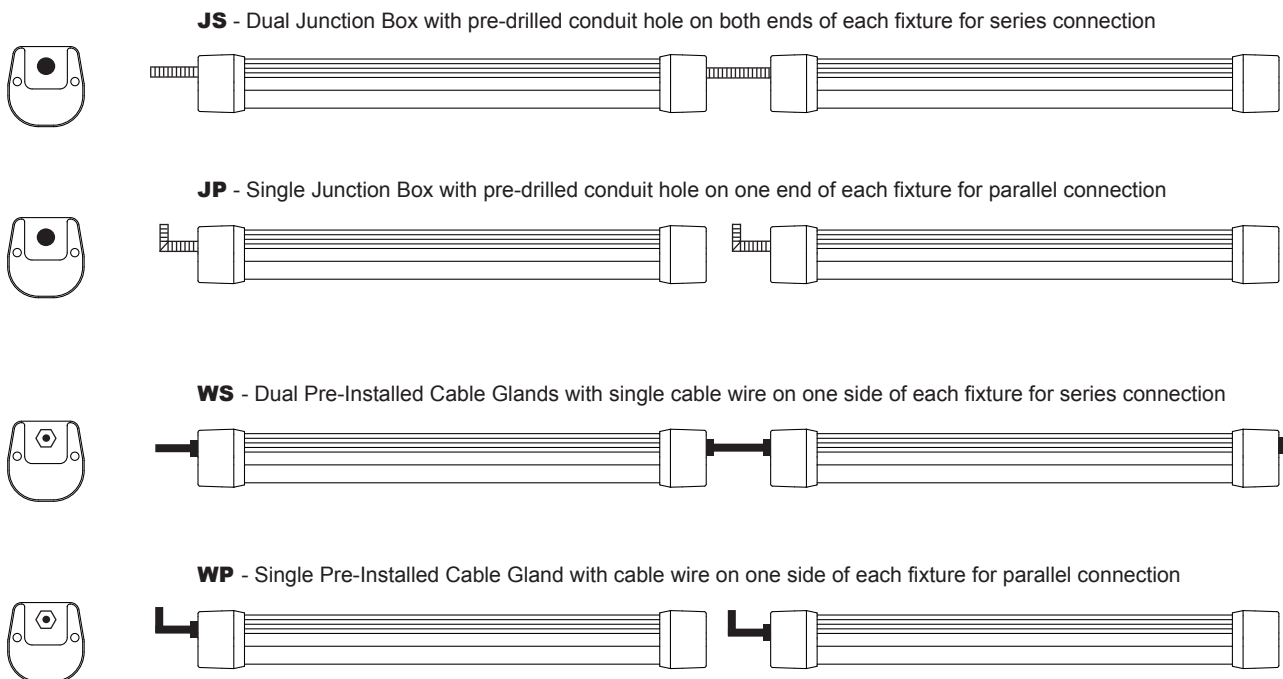
LU Series

LED Linear Utility Lighting

Mounting Options



Wiring Options

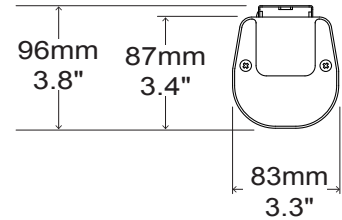
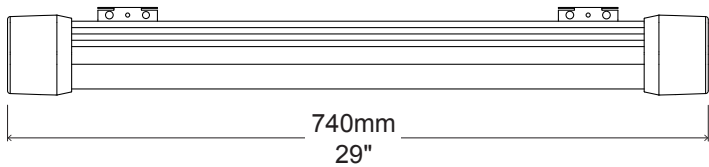


LU Series

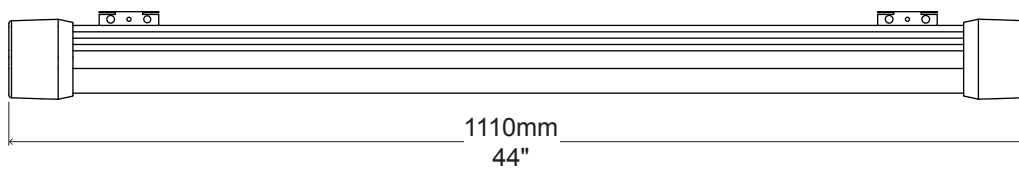
LED Linear Utility Lighting

External Dimensions

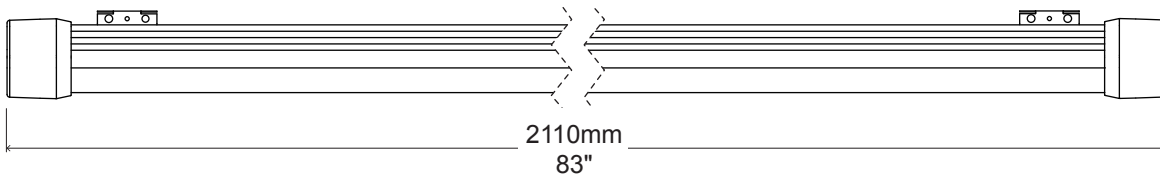
LU0720



LU1040 / LU1E40 / LU1060 / LU1E60



LU2080 / LU2120



Packaging Information

Model	Case Quantity	Dimensions (L x W x H)	Weight
LU0720	6	83 x 36 x 21 cm 32.7 x 14 x 8.3 in	13 kg 28.6 lbs
LU1040	6	117 x 36 x 21 cm 46 x 14 x 8.3 in	18 kg 40 lbs
LU1E40/1E60	6	117 x 36 x 21 cm 46 x 14 x 8.3 in	18 kg 40 lbs
LU1060	6	117 x 36 x 21 cm 46 x 14 x 8.3 in	18 kg 40 lbs
LU2080	4	217 x 24 x 21 cm 85.5 x 9.5 x 8.3 in	26.5 kg 58.4 lbs
LU2120	4	217 x 24 x 21 cm 85.5 x 9.5 x 8.3 in	26.5 kg 58.4 lbs

LU Series

LED Linear Utility Lighting

Ordering Information

LU	Length & Wattage *	Wiring **	Optics	CCT	Driver & Control	Mounting ***
	0720 = 74cm / 29" / 20Watt 1040 = 111cm / 44" / 40Watt 1E40 = 111cm / 44" / 40/10Watt 1060 = 111cm / 44" / 60Watt 1E60 = 111cm / 44" / 60/10Watt 2080 = 211cm / 83" / 80Watt 2120 = 211cm / 83" / 120Watt	JS = J-Box in Series JP = J-Box in Parallel WS = Cable in Series WP = Cable in Parallel	FL = Frosted Long CM = Clear Medium	30 = 3000K 40 = 4000K 50 = 5000K	ND = Non-Dimmable DM = Dimmable MS = Motion Sensor	SMH = Surface Mount CH2 = 2 Chain Mount

* LU1E emergency battery back up is available in standard 40 and 60 Watt configurations with an all-inclusive charger, battery, indicator and test switch.

** When ordering JS or JP Wiring options, please specify required conduit hole diameter.

*** Multi Mount system comes standard enabling surface, threaded rod and chain mounting.

Example

Part Number	Part Description
LU1040-JSFL-50DM-SMH	LED Linear Utility Light / 111cm - 44" / 40Watt / 100-277VAC / J-Box in Series / Frosted Long / 5000K Cool White / Dimmable / Surface Mount



LU Series

LED Linear Utility Lighting

Specification - Frosted Long

Model	LU0720	LU1040	LU1E40/60**	LU1060	LU2080	LU2120
Fixture Watts *	20 W	40 W	10 W	60 W	80 W	120 W
Lumens (Total) *	3,200 lm	6,240 lm	1,660 lm	9,120 lm	12,480 lm	18,240 lm
Efficacy *	160 lm / W	156 lm / W	166 lm / W	152 lm / W	156 lm / W	152 lm / W
Number of LEDs & Driving Current	104@65mA	208@65mA	208@22mA	286@65mA	416@65mA	572@65mA
T _s - Solder Point Temp *	47°C/117°F	52°C/126°F	39°C/102°F	58°C/136°F	55°C/131°F	60°C/140°F
L70 Rating @ T _a 25°C	>110K hours	>100K hours	>140K hours	>90K hours	>100K hours	>90K hours
Light Beam Angle	155° @ 80% Flux					
Operational Temperature (T _a)	-40° ~ 55°C / -40° ~ 131°F					
Input Voltage	100-277VAC 50~60Hz					
LED Model	Lumileds / Nichia / Cree					
CRI	>80					
Lighting Control	Dimmable (0-10V, PWM) / Motion Sensor					
Warranty	7-Year Limited					
Storage Temperature / Humidity	-40° ~ 80°C / -40° ~ 176°F / IP67 Rated Fixture					
Transient Surge Protection	6kV / 3kA (L-L, L-G)					

* Test data @ T_a 25°C. All lumen values have ±7% tolerance

**LU1E emergency battery back up series is available in standard 40 and 60 Watt configurations with an all-inclusive inverter, indicator, and test switch.

Specification - Clear Medium

Model	LU0720	LU1040	LU1E40/60**	LU1060	LU2080	LU2120
Fixture Watts *	20 W	40 W	10 W	60 W	80 W	120 W
Lumens (Total) *	3,440 lm	6,800 lm	1,800 lm	10,080 lm	13,600 lm	20,160 lm
Efficacy *	172 lm / W	170 lm / W	180 lm / W	168 lm / W	170 lm / W	168 lm / W
Number of LEDs & Driving Current	104@65mA	208@65mA	208@22mA	286@65mA	416@65mA	572@65mA
T _s - Solder Point Temp *	46°C/115°F	51°C/124°F	38°C/100°F	56°C/133°F	53°C/127°F	58°C/136°F
L70 Rating @ T _a 25°C	>110K hours	>100K hours	>140K hours	>90K hours	>100K hours	>90K hours
Light Beam Angle	155° @ 80% Flux					
Operational Temperature (T _a)	-40° ~ 55°C / -40° ~ 131°F					
Input Voltage	100-277VAC 50~60Hz					
LED Model	Lumileds / Nichia / Cree					
CRI	>80					
Lighting Control	Dimmable (0-10V, PWM) / Motion Sensor					
Warranty	7-Year Limited					
Storage Temperature / Humidity	-40° ~ 80°C / -40° ~ 176°F / IP67 Rated Fixture					
Transient Surge Protection	6kV / 3kA (L-L, L-G)					

* Test data @ T_a 25°C. All lumen values have ±7% tolerance

**LU1E emergency battery back up series is available in standard 40 and 60 Watt configurations with an all-inclusive inverter, indicator, and test switch.