

LX Series

FOOD PROCESSING LINEAR LED LUMINAIRE



LX Series

LED Food Processing Linear Lighting



Product Information

The LX Series is an NSF-certified and IP69K-rated LED linear light designed to withstand the demanding environments of modern food processing industry. This corrosion resistant fixture is available in multiple lengths and is ideal for applications that require daily cleaning with high pressure wash downs such as.

Applications

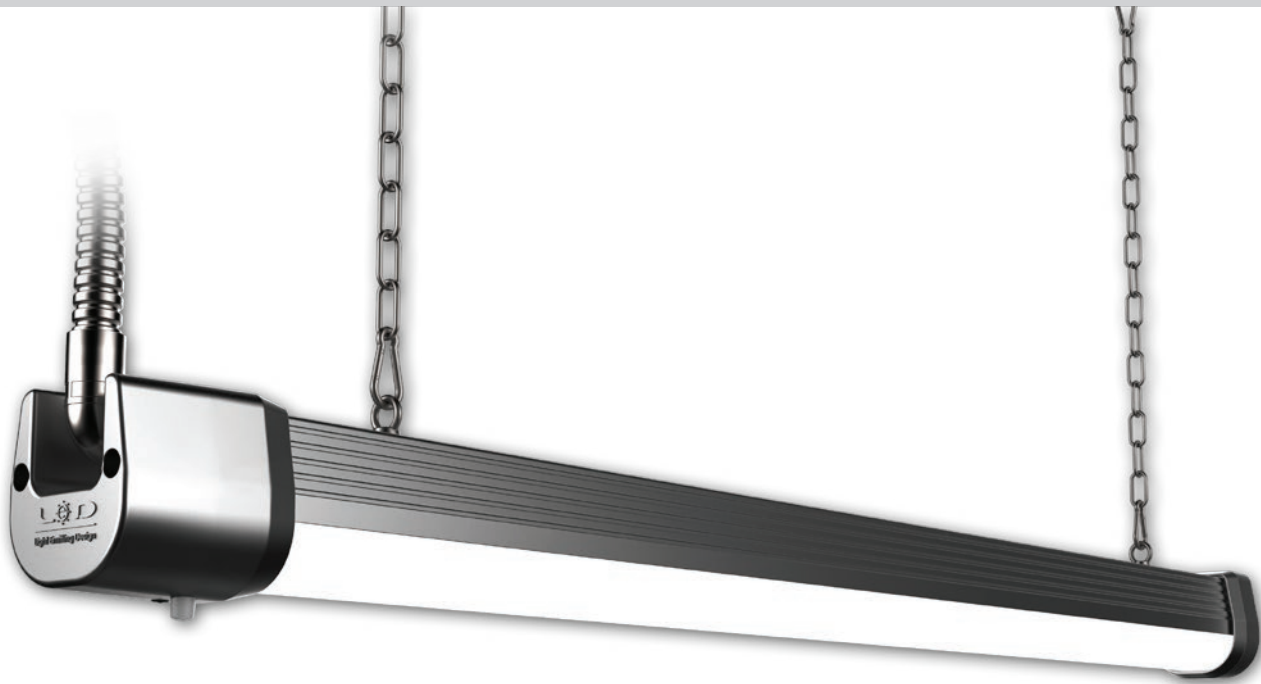
- Canneries
- Meat Packing Plants
- Slaughterhouses
- Rendering Plants
- Sugar Mills
- Dairy Processing
- Bottling Plants
- Chicken Farms

It is available in numerous high efficacy lumen packages and delivers ultra-wide 155° glare free, uniform lighting for outstanding horizontal and vertical surface coverage. Excellent thermal management ensures long LED life with extended lumen maintenance and virtually zero fixture maintenance. The LX Series has an IK10-impact rating and incorporates an all-inclusive junction box for simple installation with end to end connections.

Patent No.US 10,222,052 B1
Other US and international patents pending

LX Series

LED Food Processing Linear Lighting



Years Warranty



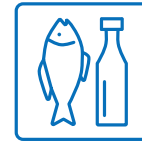
Wet Location



Pressure Washable



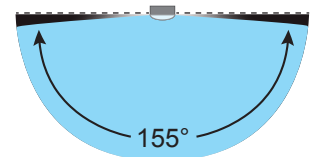
Impact Resistance



Food Processing

Advantages of LX Series

- NSF-certified LED food & beverage processing linear light
- High efficacy fixture up to 170 lm / W
- Flexible wattages and lengths ranging from 20 ~ 120 Watt
- Deep anodized aircraft grade extruded billet aluminum housing
- Hard UV coated, chemical resistant polycarbonate lens cover
- Nylon 66 junction box enabling IK10 extreme impact rating
- Glare free 155° wide angle optics reducing fixture count by up to 25%
- High pressure washable IP69K-rated tri-proof (dust, vapor & water-proof) fixture
- Lightweight design with accessible junction box for simplified installation
- 80CRI for exceptional color rendition
- Optional smart motion sensing with soft dimming function
- Optional all-inclusive emergency battery backup system 10 Watt / 90 minutes
- Versatile mounting options for all types of food & beverage processing applications
- L70 ≥ 100,000 hours with 7-year limited warranty
- Designed and engineered in the USA

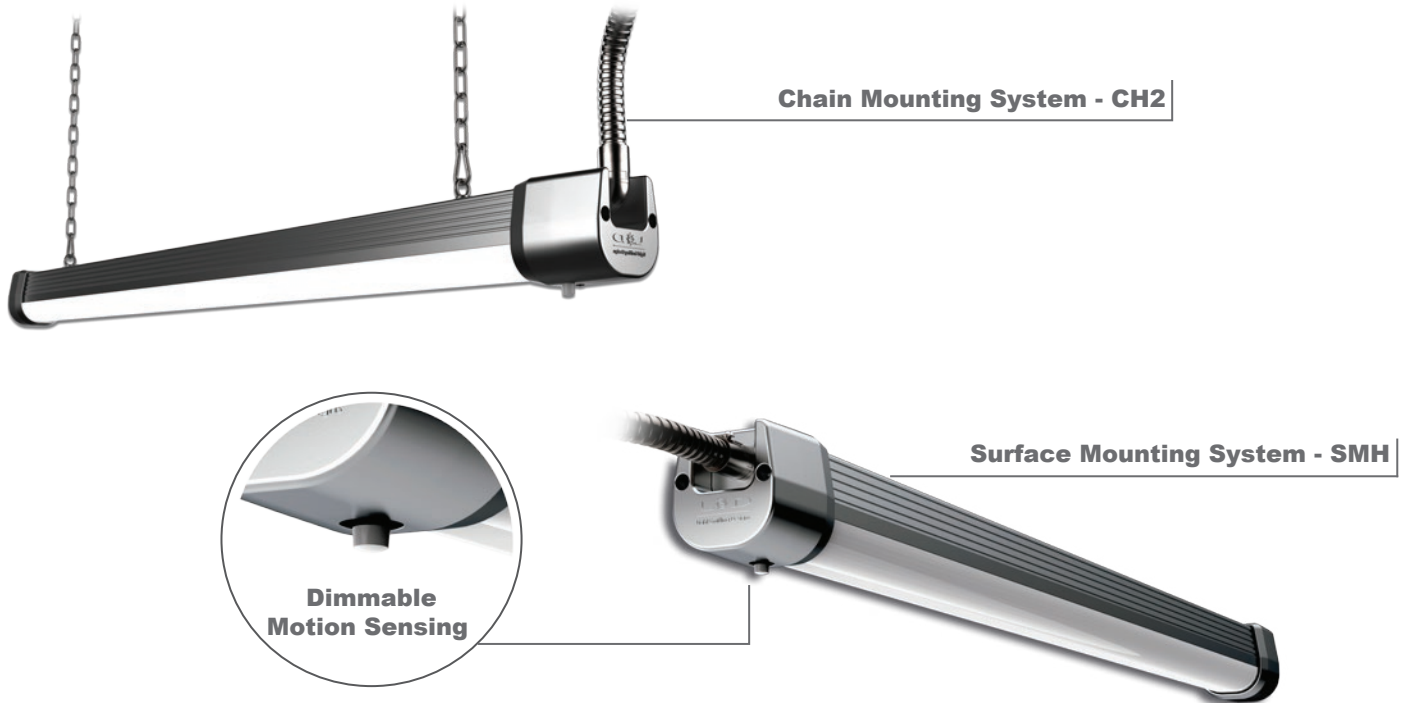


Wide Angle Optics

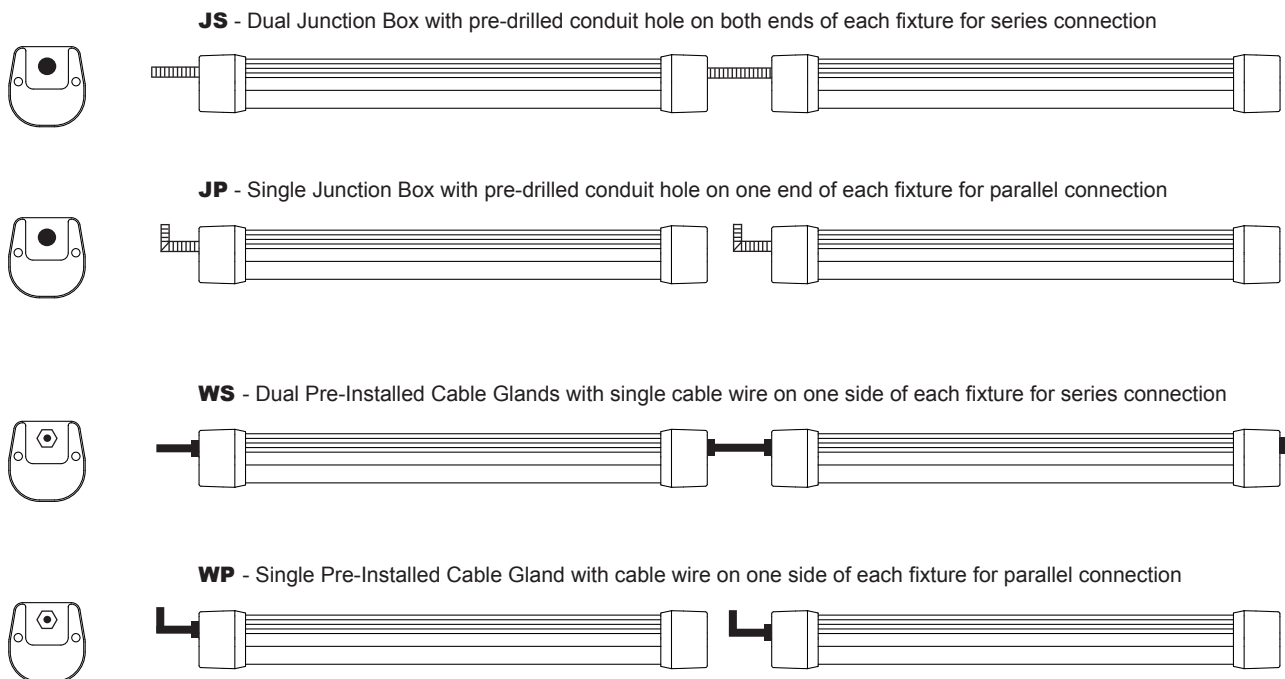
LX Series

LED Food Processing Linear Lighting

Mounting Options



Wiring Options

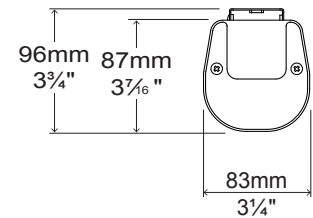
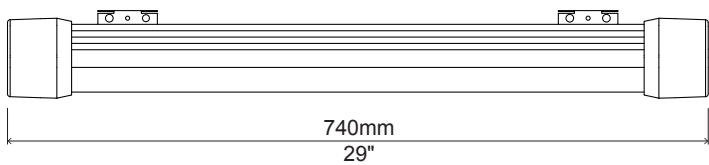


LX Series

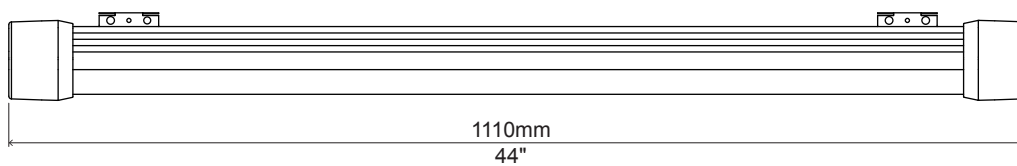
LED Food Processing Linear Lighting

External Dimensions

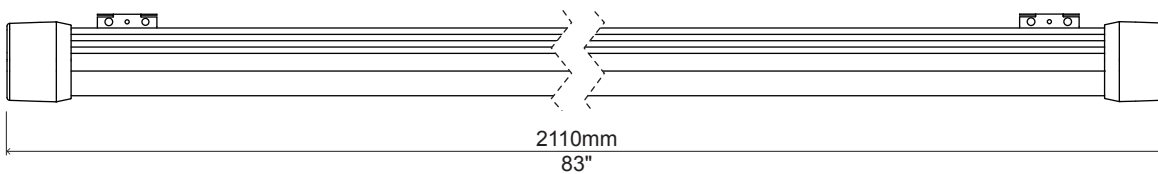
LX0720



LX1040 / LX1E40 / LX1060 / LX1E60



LX2080 / LX2120



Packaging Information

Model	Case Quantity	Dimensions (L x W x H)	Weight
LX0720	6	83 x 36 x 21 cm 32.7 x 14 x 8.3 in	13 kg 28.6 lbs
LX1040	6	117 x 36 x 21 cm 46 x 14 x 8.3 in	18 kg 40 lbs
LX1E40/1E60	6	117 x 36 x 21 cm 46 x 14 x 8.3 in	18 kg 40 lbs
LX1060	6	117 x 36 x 21 cm 46 x 14 x 8.3 in	18 kg 40 lbs
LX2080	4	217 x 24 x 21 cm 85.5 x 9.5 x 8.3 in	26.5 kg 58.4 lbs
LX2120	4	217 x 24 x 21 cm 85.5 x 9.5 x 8.3 in	26.5 kg 58.4 lbs

LX Series

LED Food Processing Linear Lighting

Ordering Information

LX	Length & Wattage *	Wiring **	Optics	CCT	Driver & Control	Mounting ***
	0720 = 74cm / 29" / 20Watt 1040 = 111cm / 44" / 40Watt 1E40 = 111cm / 44" / 40/10Watt 1060 = 111cm / 44" / 60Watt 1E60 = 111cm / 44" / 60/10Watt 2080 = 211cm / 83" / 80Watt 2120 = 211cm / 83" / 120watt	JS = J-Box in Series JP = J-Box in Parallel WS = Cable in Series WP = Cable in Parallel	FL = Frosted Long CM = Clear Medium	30 = 3000K 40 = 4000K 50 = 5000K	ND = Non-Dimmable DM = Dimmable MS = Motion Sensor	SMH = Surface Mount CH2 = 2 Chain Mount

* LX1E emergency battery back up is available in standard 40 and 60 Watt configurations with an all-inclusive charger, battery, indicator and test switch.

** When ordering JS or JP Wiring options, please specify required conduit hole diameter.

*** Multi Mount system comes standard enabling surface, threaded rod and chain mounting.

Example

Part Number	Part Description
LX1040-JSFL-50DM-SMH	LED Food Processing Linear Light / 111cm - 44" / 40Watt / 100-277VAC / J-Box in Series / Frosted Long / 5000K Cool White / Dimmable / Surface Mount



LX Series

LED Food Processing Linear Lighting

Specification - Frosted Long

Model	LX0720	LX1040	LX1E40/60**	LX1060	LX2080	LX2120
Fixture Watts *	20 W	40 W	10 W	60 W	80 W	120 W
Lumens (Total) *	3,200 lm	6,240 lm	1,660 lm	9,120 lm	12,480 lm	18,240 lm
Efficacy *	160 lm / W	156 lm / W	166 lm / W	152 lm / W	156 lm / W	152 lm / W
Number of LEDs & Driving Current	104@65mA	208@65mA	208@22mA	286@65mA	416@65mA	572@65mA
T _s - Solder Point Temp *	47°C/117°F	52°C/126°F	39°C/102°F	58°C/136°F	55°C/131°F	60°C/140°F
L70 Rating @ T _a 25°C	>110K hours	>100K hours	>140K hours	>90K hours	>100K hours	>90K hours
Light Beam Angle	155° @ 80% Flux					
Operational Temperature (T _a)	-40° ~ 55°C / -40° ~ 131°F					
Input Voltage	100-277VAC 50~60Hz					
LED Model	Lumileds / Nichia / Cree					
CRI	>80					
Lighting Control	Dimmable (0-10V, PWM) / Motion Sensor					
Warranty	7-Year Limited					
Storage Temperature / Humidity	-40° ~ 80°C / -40° ~ 176°F / IP69K Rated Fixture					
Transient Surge Protection	6kV / 3kA (L-L, L-G)					

* Test data @ T_a 25°C. All lumen values have ±7% tolerance

**LX1E emergency battery back up series is available in standard 40 and 60 Watt configurations with an all-inclusive inverter, indicator, and test switch.

Specification - Clear Medium

Model	LX0720	LX1040	LX1E40/60**	LX1060	LX2080	LX2120
Fixture Watts *	20 W	40 W	10 W	60 W	80 W	120 W
Lumens (Total) *	3,440 lm	6,800 lm	1,800 lm	10,080 lm	13,600 lm	20,160 lm
Efficacy *	172 lm / W	170 lm / W	180 lm / W	168 lm / W	170 lm / W	168 lm / W
Number of LEDs & Driving Current	104@65mA	208@65mA	208@22mA	286@65mA	416@65mA	572@65mA
T _s - Solder Point Temp *	46°C/115°F	51°C/124°F	38°C/100°F	56°C/133°F	53°C/127°F	58°C/136°F
L70 Rating @ T _a 25°C	>110K hours	>100K hours	>140K hours	>90K hours	>100K hours	>90K hours
Light Beam Angle	155° @ 80% Flux					
Operational Temperature (T _a)	-40° ~ 55°C / -40° ~ 131°F					
Input Voltage	100-277VAC 50~60Hz					
LED Model	Lumileds / Nichia / Cree					
CRI	>80					
Lighting Control	Dimmable (0-10V, PWM) / Motion Sensor					
Warranty	7-Year Limited					
Storage Temperature / Humidity	-40° ~ 80°C / -40° ~ 176°F / IP69K Rated Fixture					
Transient Surge Protection	6kV / 3kA (L-L, L-G)					

* Test data @ T_a 25°C. All lumen values have ±7% tolerance

**LX1E emergency battery back up series is available in standard 40 and 60 Watt configurations with an all-inclusive inverter, indicator, and test switch.